

mahlum

Schematic Design WORKSHOP 01
Grant High School Modernization
01.09.16



Today's Agenda

Project Overview (:30 min)

Group Activity 01 (:45 min)

Activate the Goals

Discussion (:30 min)

Group Activity 02 (:45 min)

Spectrums

Discussion (:30 min)

Project Overview

Project Background

Proposed Building Program :: With a Focus on Comparison

Master Plan

Fields

Overview of Today's Group Activities

Project Overview

Project Background

Proposed Building Program :: With a Focus on Comparison

Master Plan

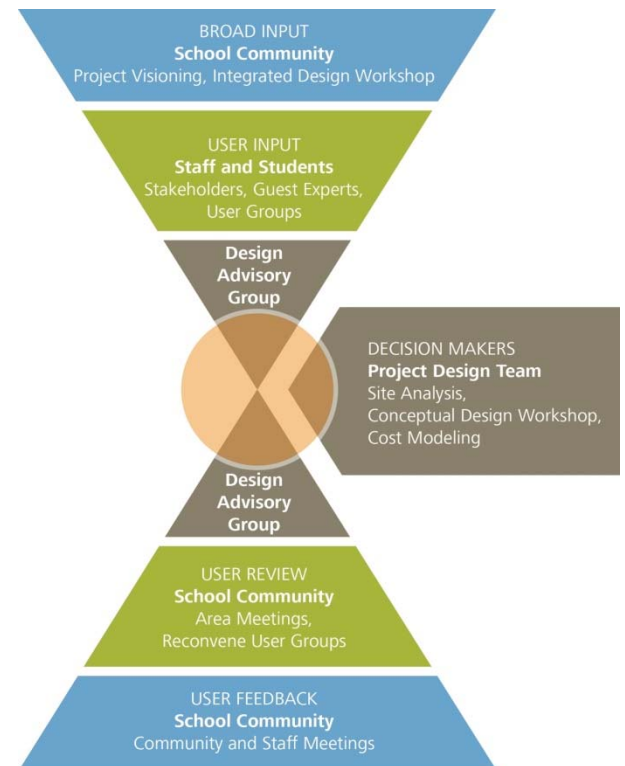
Fields

Overview of Today's Group Activities



Contributing Voices

PPS Board of Education
 Stakeholder Cohorts
 Design Advisory Group
 Guest Experts
 Students
 Parents
 Community



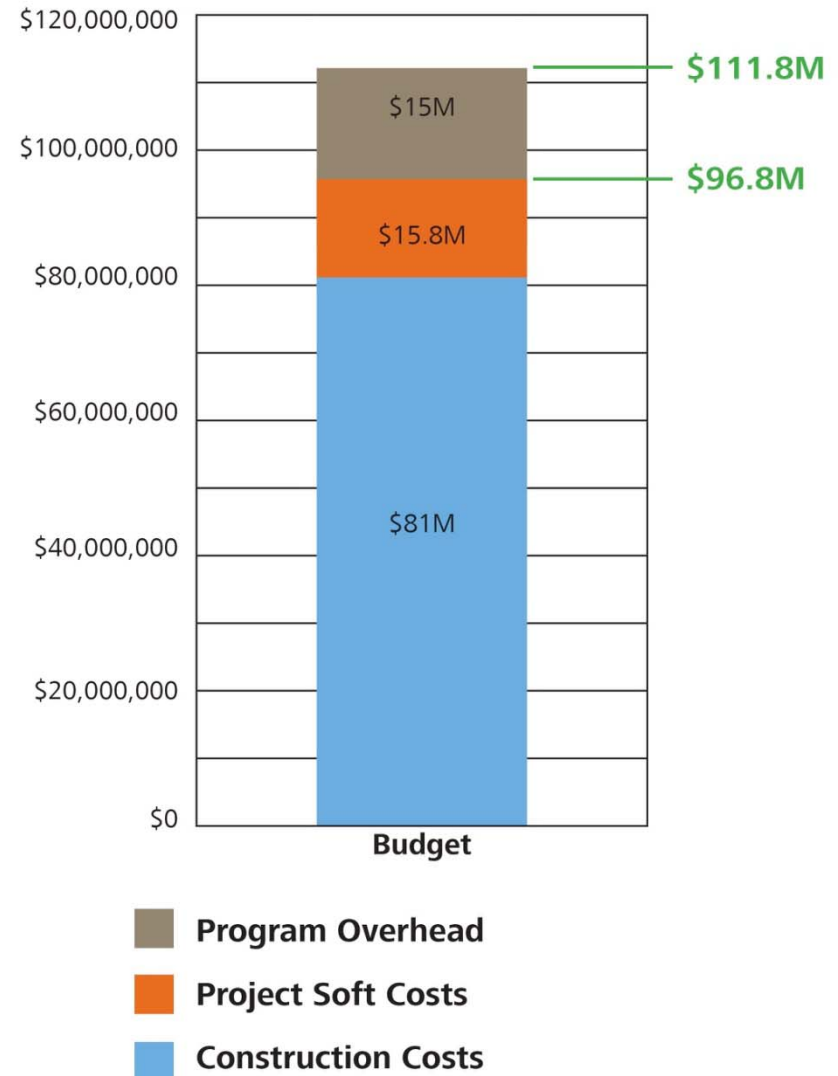
Project Budget

Construction

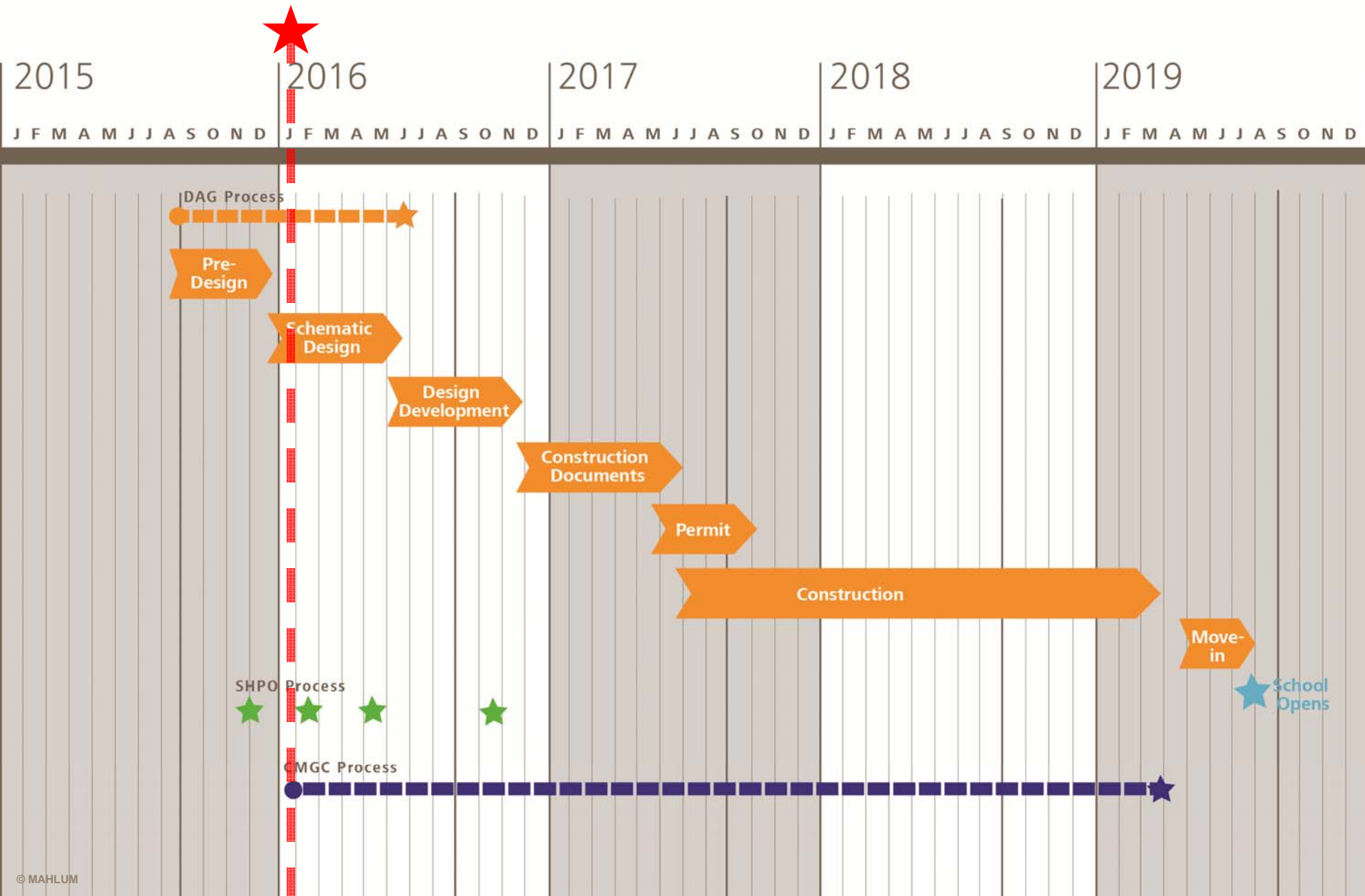
- Historic Preservation
- Modernization
- Site improvements
- Offsite improvements
- Contingency and sales tax

Project "soft costs"

- New furniture and equipment
- Classroom technology
- Network and phones
- Professional services
- Permit and utility fees



Project Schedule





Meeting Schedule

DAG 01	Sep 09	S.I.B.C. Meeting	Dec 08
DAG 02	Sep 24	School Board	Dec 15
DAG 03	Oct 08	DAG 06	Dec 16
School Tours	Oct 23	SD Workshop 1*	Jan 09
MP Workshop 1*	Oct 24	DAG 07	Jan 21
DAG 04	Nov 05	SD Workshop 2*	Feb 06
MP Workshop 2*	Nov 07	DAG 08	Mar 03
DAG 05	Nov 19	SD Open House*	Mar 31
MP Open House*	Dec 03	DAG 09	Apr 28

*Community Focused Meetings

Grant Bond Website



News | Directory

Welcome

Students

Families

Get Ready

About

Board

Calendars

Departments

Schools

Employment

Top topics

Google Custom Search

Search PPS

Get urgent news

How do I?

Go

- Bond
- Community Oversight
- Get Involved
- Student Engagement
- Faubion
- Franklin
- Grant
- Roosevelt
- Summer Projects
- Seismic
- Accessibility
- Roof replacement
- News & Media
- Doing business with PPS
- Long Range Facilities Plan
- Bond Timelines
- Interactive map
- Bond Board Resolutions
- FAQs and Bond History
- High School Master Plans

PPS Home > Bond > Grant



Grant High School is one of 3 PPS high schools being modernized as part of the 8-year \$482 million School Building Improvement Bond. Grant's modernization will completely reconfigure and update learning spaces with a focus on indoor environmental quality, sustainability and historic preservation. [Learn more about Grant High School here.](#)

The planning for a new Grant began in the fall of 2015 and construction is scheduled to begin in summer 2017 and last 2 years. Students are scheduled to returned to a Modernized Grant in the fall of 2019.

Schematic Design Workshop #1 Saturday, January 9th, 9a.m. - Noon in the Library

The Grant Master Plan was approved by the School Board on 12-15-15

[View The Grant Master Planning Open House Presentation \(12-3-15\)](#)

[View the Grant Master Plan concept images here](#)

[View the Grant Modernization flyer \(10/23/15\) | in Español](#)

Get Involved

In the fall of 2015 a series of [Public Design Workshops](#) will take place providing the Grant community a voice in the design process. The first Schematic Design workshop is scheduled for Saturday, Jan. 9th from 9a.m. - Noon in the GHS Library.

Grant Design Advisory Group (DAG)

Stay Informed

The Grant Master Plan was approved on a 6-0 vote by the School Board on 12-15-15.

View a slideshow from the first Master Planning workshop below.

Get Connected

Get connected to receive updates and events notices. [Join the Grant project mailing list at GHSmod@pps.net](#)

For more information about school building improvements, contact: 503-916-2222 or email schoolmodernization@pps.net

PPS Social Media links [f](#) [t](#) [v](#)

www.pps.k12.or.us/bond/grant

Project Overview

Project Background

Proposed Building Program :: With a Focus on Comparison

Master Plan

Fields

Overview of Today's Group Activities

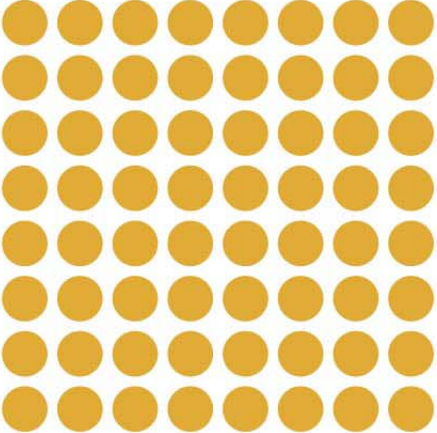
Grant: Proposed Building Program

Area Summary

Program Area	Ed Spec Program		GHS Existing Program		GHS Proposed Program	
	Sta	NSF	Sta	NSF	Sta	NSF
CORE ACADEMIC PROGRAMS						
Career Preparation / CTE / Electives	9	12,080	8	13,543	9	12,270
General Education Classrooms	35	34,300	45	35,037	40	34,000
Specialized Classrooms (Science)	11	17,480	11	15,840	13	17,580
Extended Learning		8,000		0		8,000
TOTAL: CORE ACADEMIC PROGRAMS	55	71,860	64	64,420	62	71,850
FINE & PERFORMING ARTS						
Fine & Visual Arts	2	3,080	4	6,368	4	5,740
Band / Orchestra	1	3,470	1	1,744	1	3,470
Choir		200	1	2,956	1	1,700
Theater / Dance	1	14,600	2	20,654	2	24,050
TOTAL: FINE & PERFORMING ARTS	4	21,350	8	31,722	8	34,960
PHYSICAL EDUCATION / ATHLETICS						
TOTAL: PE / ATHLETICS	3	35,580	5	42,737	5	35,730
EDUCATIONAL SUPPORT						
TOTAL: EDUCATIONAL SUPPORT	1	67,200	6	60,773	6	65,170
SMALL INSTRUCTIONAL SPACES						
TOTAL: SMALL INSTR. SPACES	10	5,000	0	0	0²	5,000
PARTNER & COMMUNITY USES						
TOTAL: PARTNER & COMM. USES		1,200		620		1,590
WRAP-AROUND SERVICE PROVIDERS						
TOTAL: WRAP-AROUND SERV. PROV.		4,700		1,445		4,830
Total Assignable Square Feet	73	206,890	83	201,720	81	219,130
<i>Subtotal - Unassignable Areas</i>	<i>26.5%</i>	<i>74,480</i>	<i>25.8%</i>	<i>70,230</i>	<i>88³</i>	<i>75,850</i>
TOTAL BUILDING GROSS SF		281,370		271,950		294,980

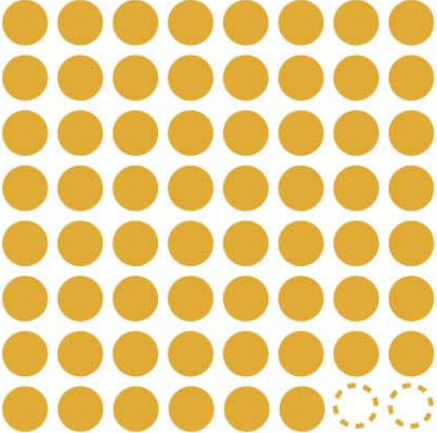
EXISTING

TEACHING STATIONS
64 AT 740 SF



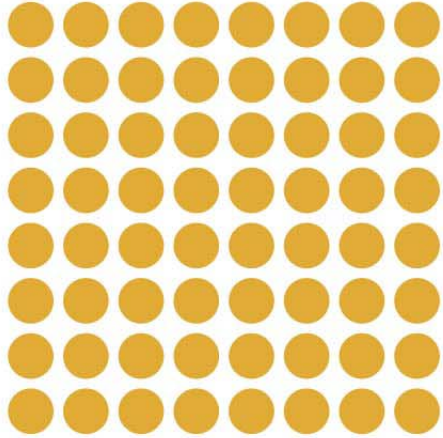
PROPOSED

TEACHING STATIONS
62 AT 850 SF



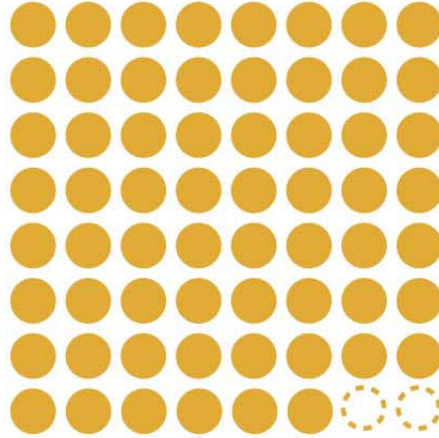
EXISTING

TEACHING STATIONS
64 AT 740 SF



PROPOSED

TEACHING STATIONS
62 AT 850 SF

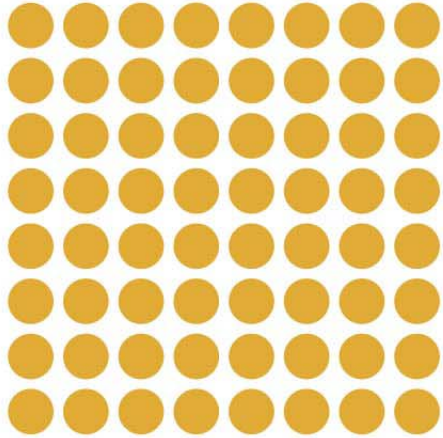


TEACHER OFFICE / CLASSROOMS
1 AT 1500
2 AT 1200
4 AT 850 SF



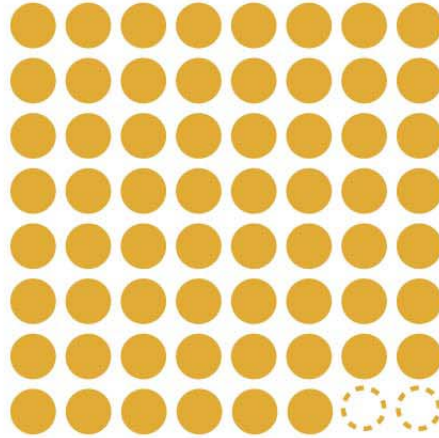
EXISTING

TEACHING STATIONS
64 AT 740 SF



PROPOSED

TEACHING STATIONS
62 AT 850 SF



TEACHER OFFICE / CLASSROOMS
1 AT 1500
2 AT 1200
4 AT 850 SF

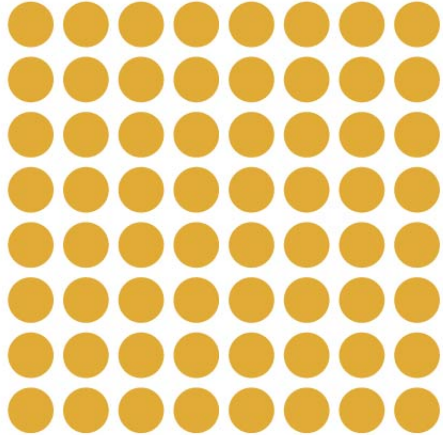


SMALL INSTRUCTION SPACES
10 AT 500 SF



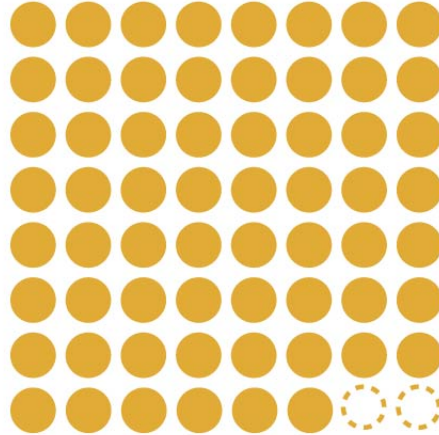
EXISTING

TEACHING STATIONS
64 AT 740 SF



PROPOSED

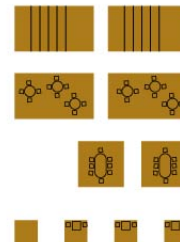
TEACHING STATIONS
62 AT 850 SF



TEACHER OFFICE / CLASSROOMS
1 AT 1500
2 AT 1200
4 AT 850 SF



SMALL INSTRUCTION SPACES
10 AT 500 SF



EXTENDED LEARNING SPACES
2 OPEN / ENCLOSED
2 OPEN
2 ENCLOSED
4 ENCLOSED



Grant: Total Building Gross

Area Summary

PPS Grant High School Program Summary

Program Area	Ed Spec Program		GHS Existing Program		GHS Proposed Program	
	Sta	NSF	Sta	NSF	Sta	NSF
Total Assignable Square Feet	73	206,890	83	201,720	81	219,130
<i>Subtotal - Unassignable Areas</i>	<i>26.5%</i>	<i>74,480</i>	<i>25.8%</i>	<i>70,230</i>	<i>88 **</i>	<i>75,850</i>
TOTAL BUILDING GROSS SF		281,370		271,950		294,980
					GSF Overage	13,610



* Teacher offices are designed to function as enclosed classrooms as necessary and would provide an additional (7) teaching stations.
 **Total teaching stations, if include teacher offices as classrooms.

Program Additions (Grant HS Programs not in Ed Spec):

Medically Fragile Program	2,200 NSF
Choir Classroom	2,200 NSF
AVID, Virtual Scholars, Rest. Justice	2,220 NSF
Gender-Neutral Facilities	630 NSF
Total NSF	7,250 NSF

Reuse of Existing Theater / Balcony 7,000 NSF

Project Overview

Project Background

Proposed Building Program :: With a Focus on Comparison

Master Plan

Fields

Overview of Today's Group Activities

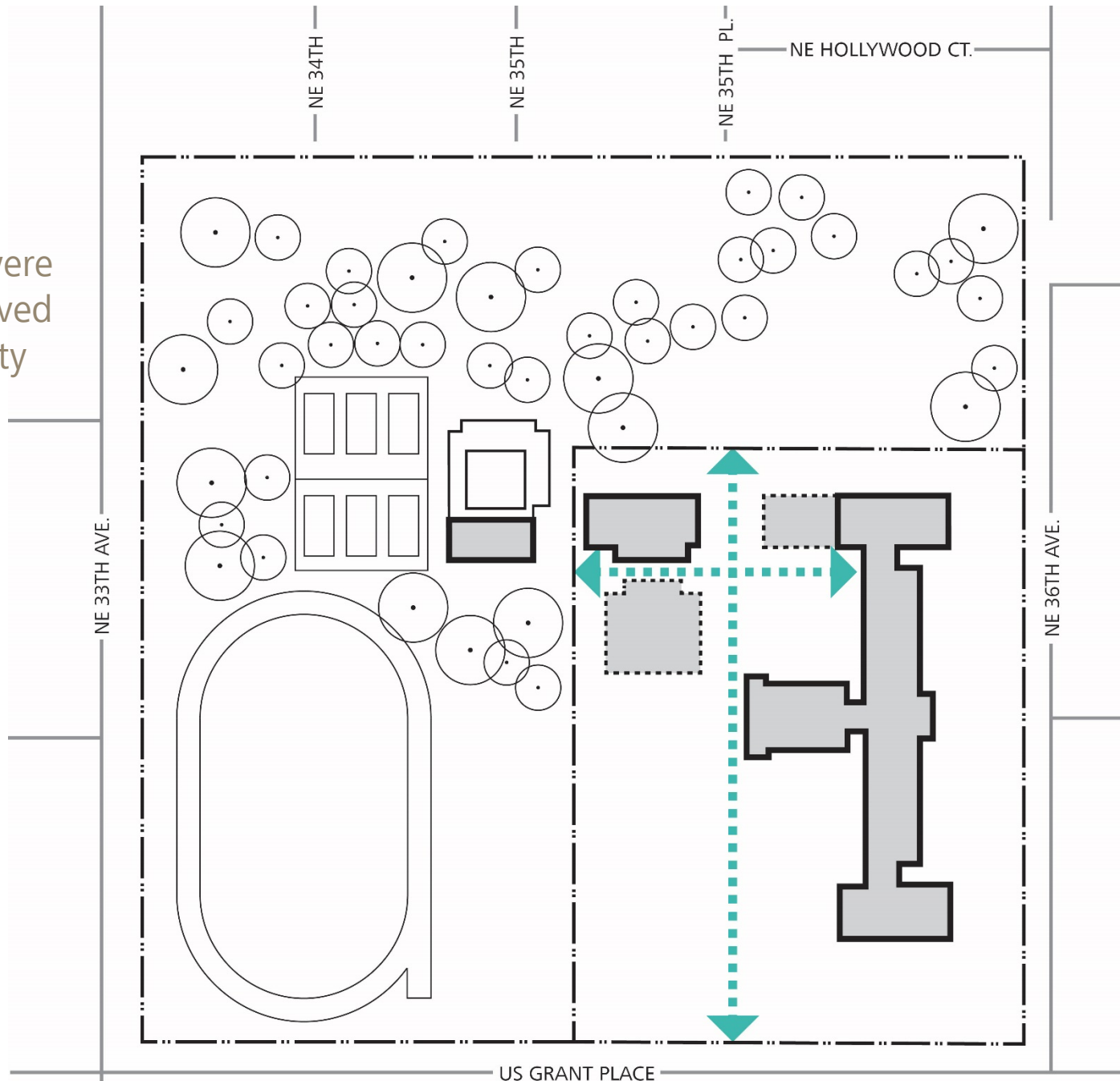
Mission and Goals

- 1 Sustain a student-centered approach, where all learners feel connected by celebrating diversity and inclusion
 - 2 Design a building to inspire learning, to serve as a place of possibility
- TIE
- 2 Support the educational mission of Grant with a variety of flexible study & project spaces that anticipate future needs
 - 4 Accommodate diverse teaching & learning styles to facilitate strong relationships
 - 5 Create state-of-the-art facilities for all disciplines

The Grant High School modernization will result in an inclusive learning environment that fosters strong, productive relationships among students, teachers, and the community through inspiring, flexible spaces that honor the history while supporting students' success in college, career, and life.

Themes

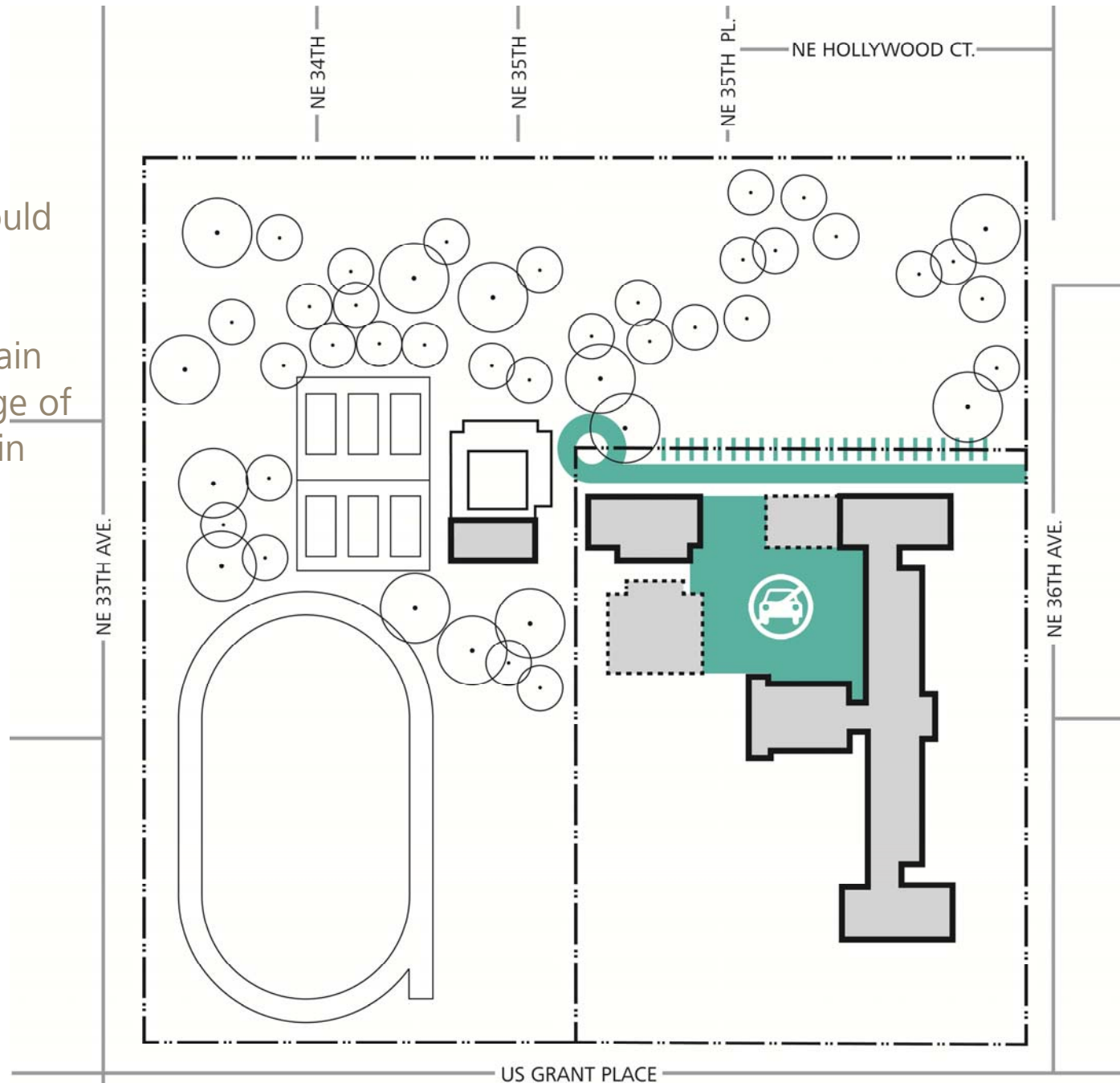
Significant new pedestrian routes were proposed for improved inter-site connectivity between Grant, Grant park, and the neighborhood



Themes

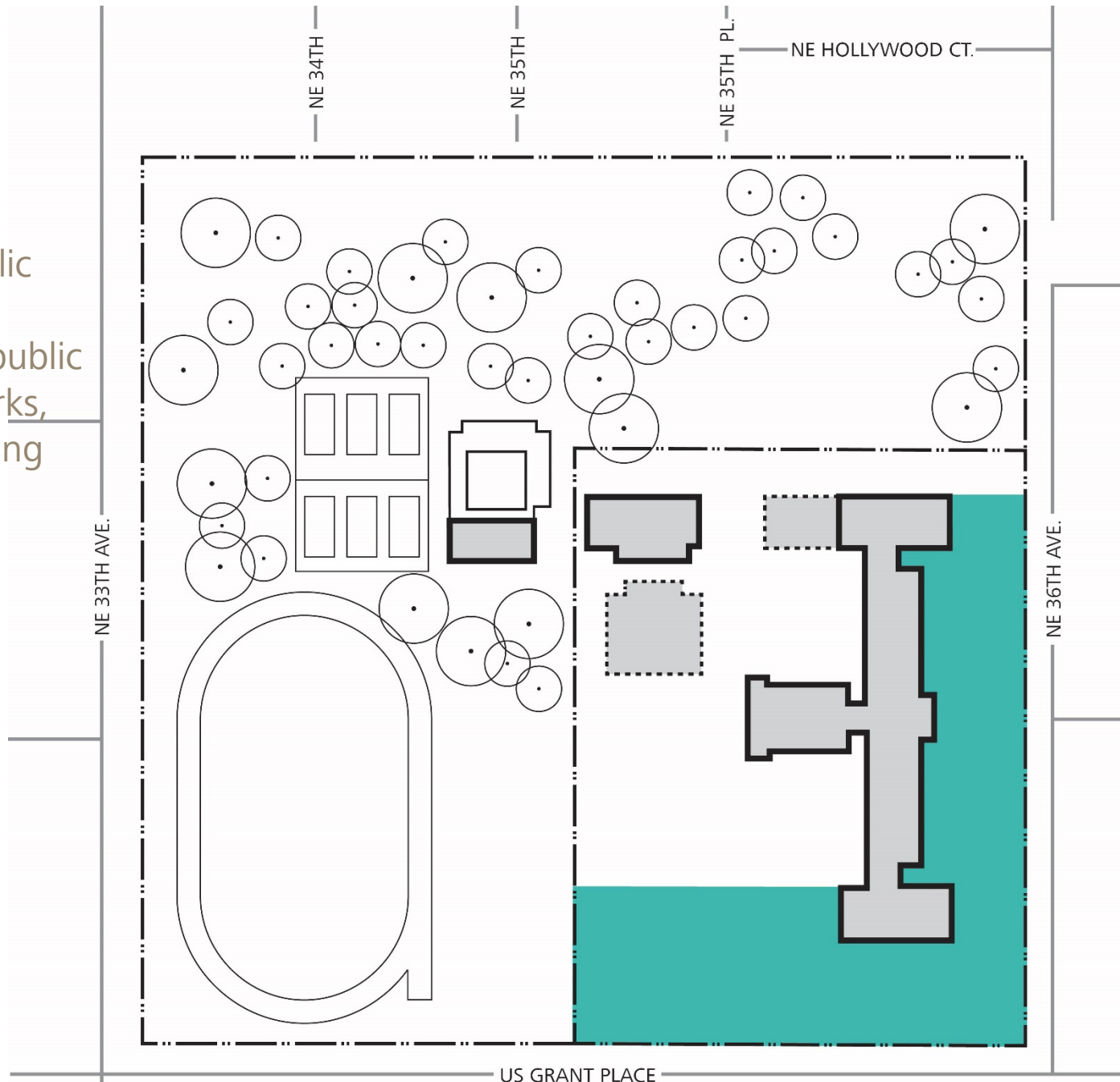
Central campus should be car free

Parking should remain along the north edge of the site. Reduction in quantity was acceptable.



Themes

Create a shared use zone along the public edges of the site – consider including public gardens, pocket parks, open space, gathering plazas, raingardens, bike racks, etc.



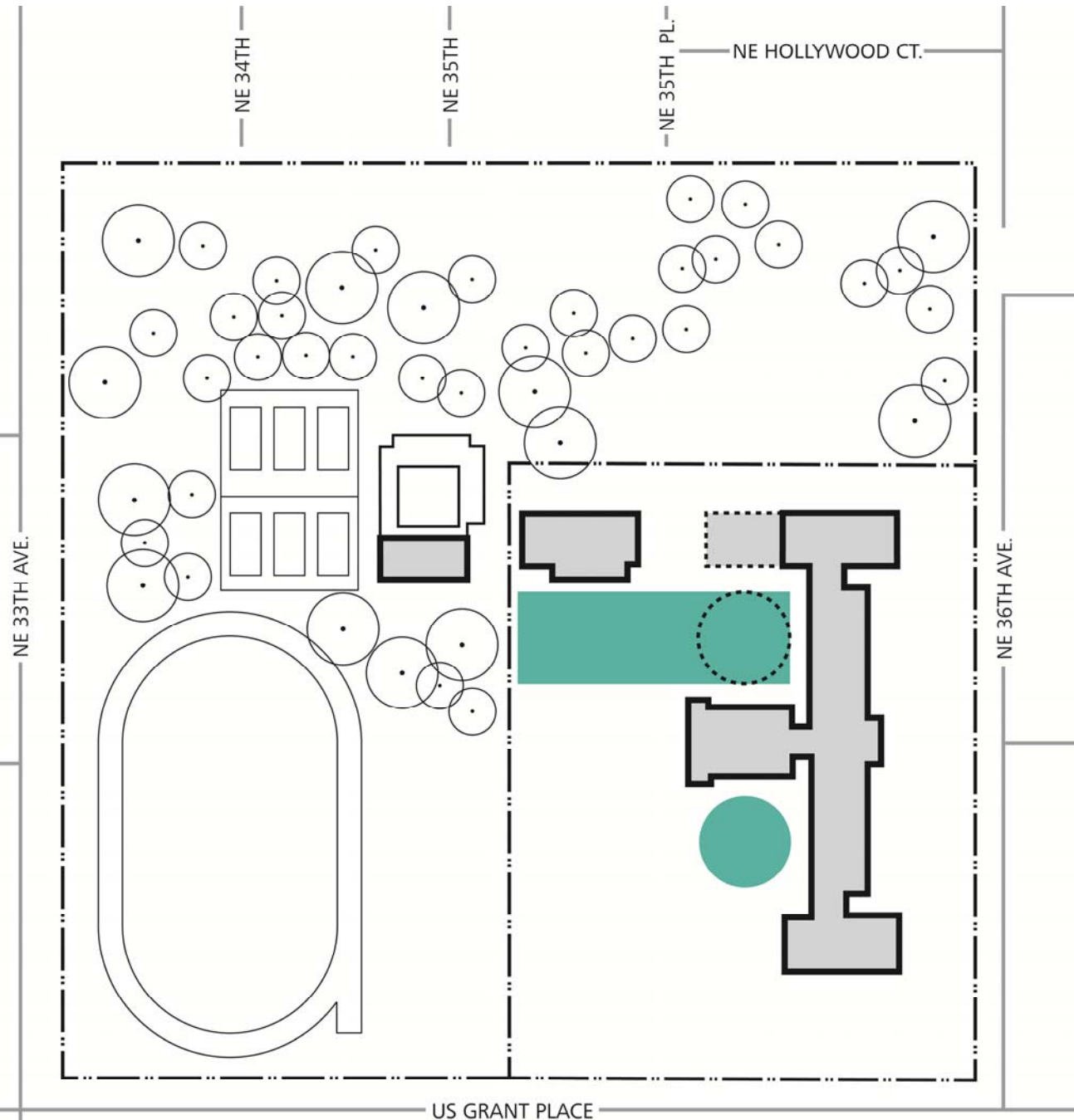
Themes

Create a large outdoor courtyard that connects to the park and pool

Create outdoor learning courtyards with strong interior/exterior connectivity

Provide outdoor social gathering areas central to campus where students can gather and clump safely

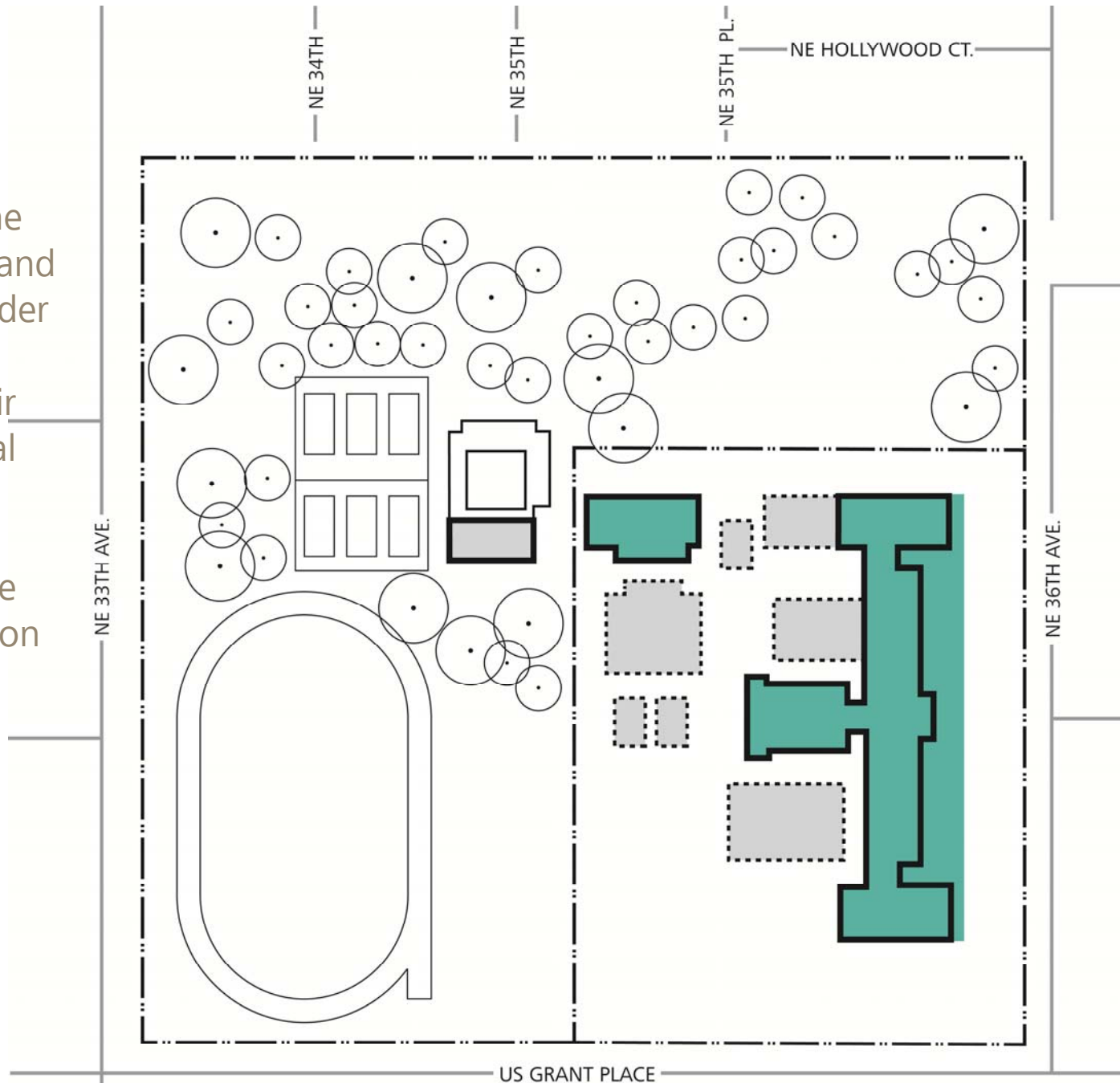
Integrate outdoor areas with the educational program



Themes

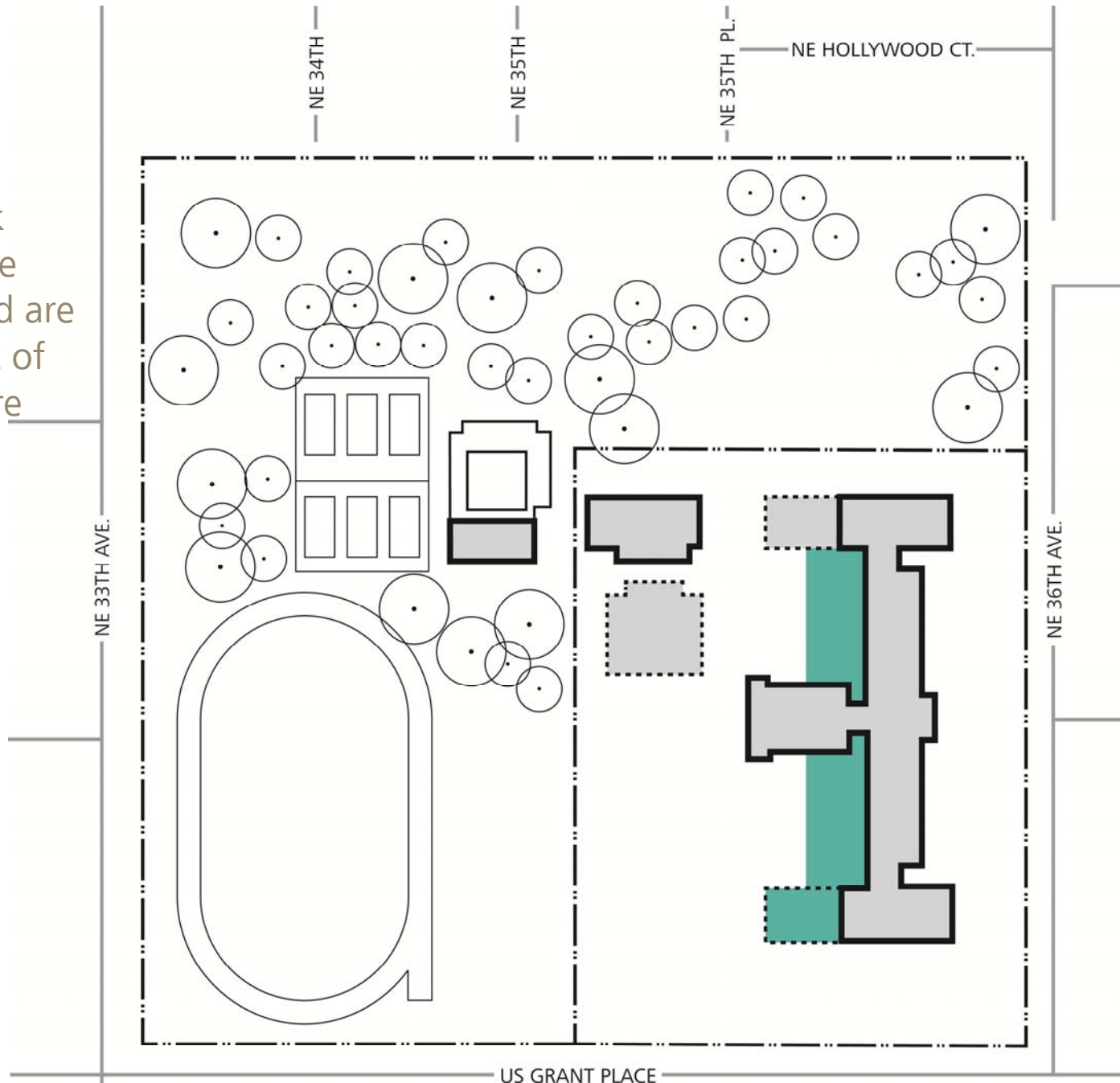
Historic elements the community values, and would like to consider preserving, and/or repurposing for their historic or emotional value

Areas that should be studied for demolition are shown dashed



Themes

Additions that work with the grain of the original building and are parallel to and west of the existing structure were popular



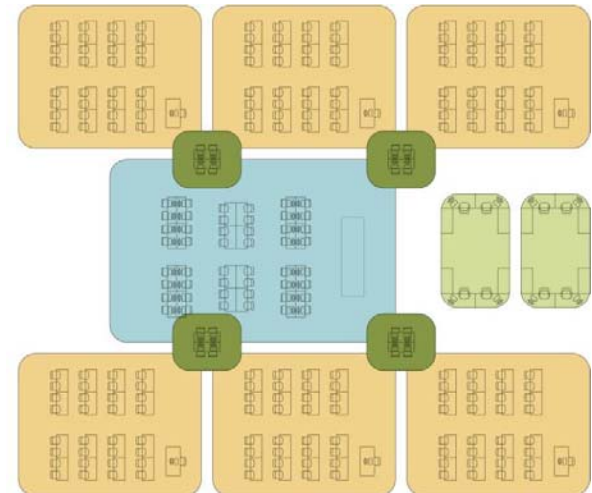
Does Preservation mean Compromise?

Core Learning

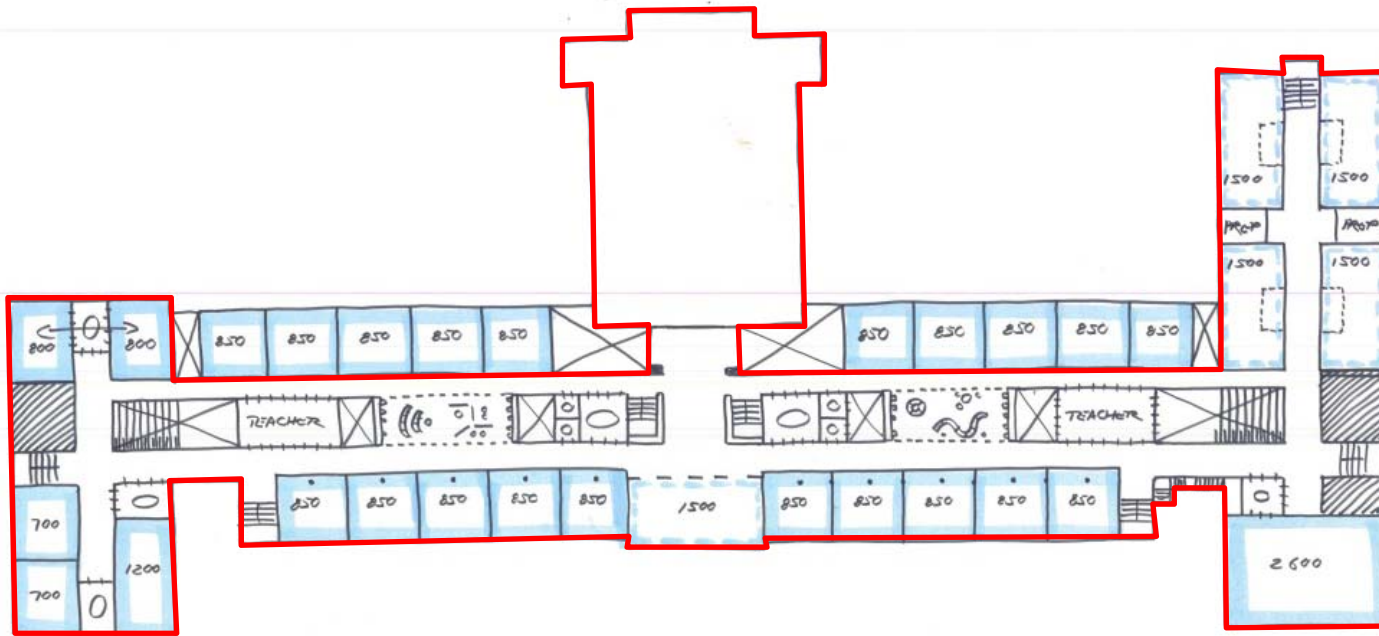
Traditional



21st Century

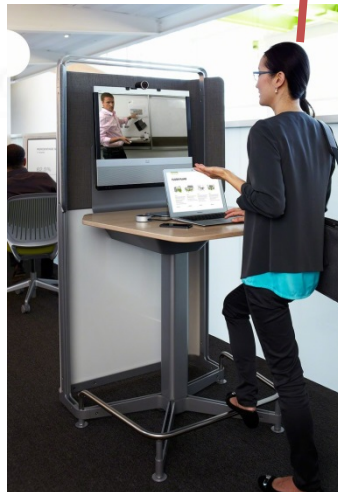
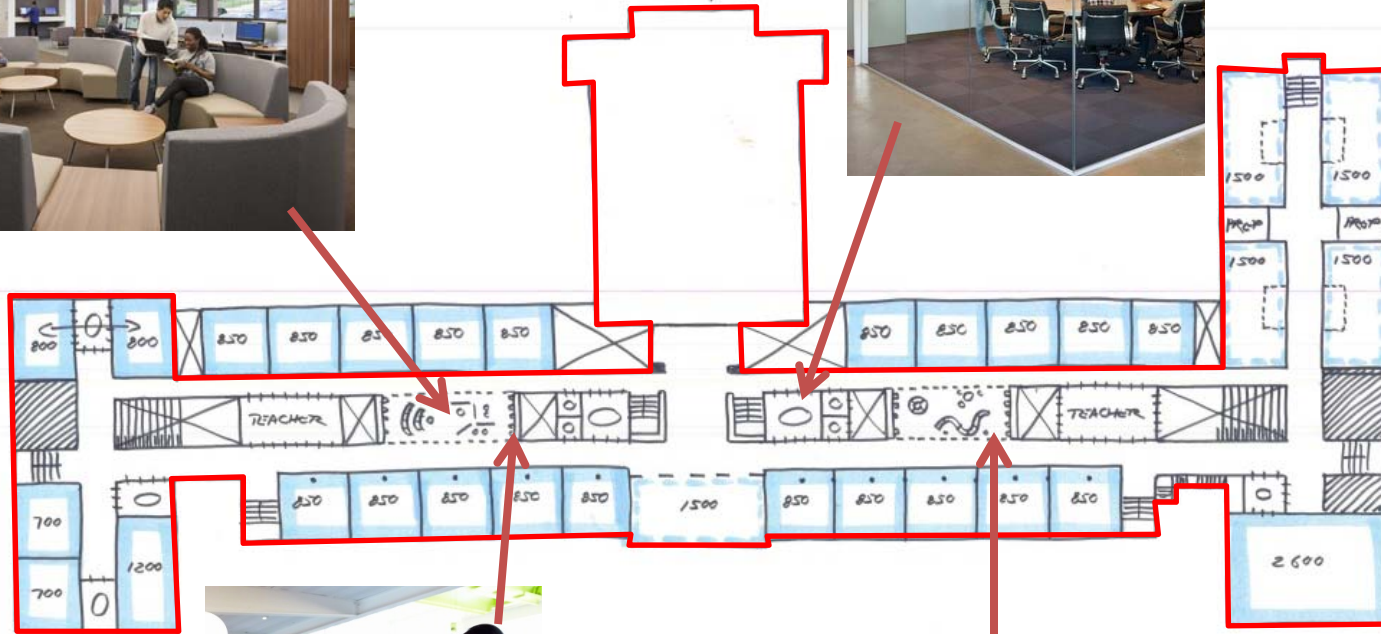


Preservation without Compromise

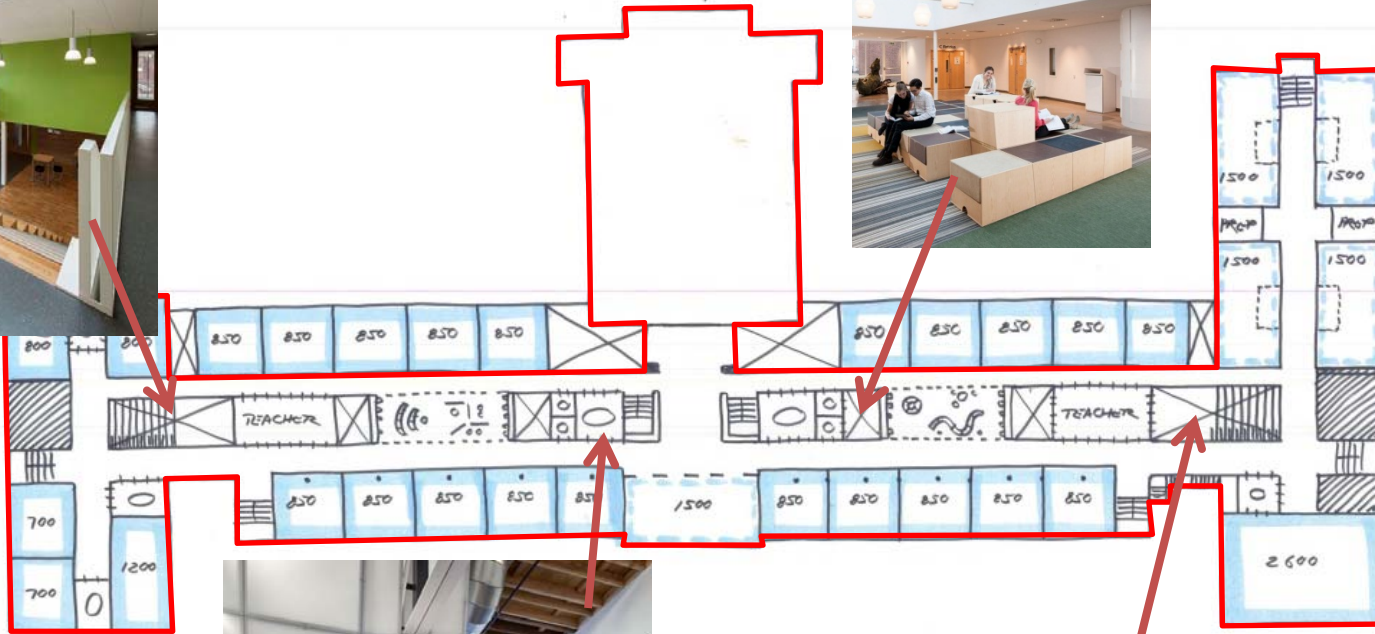


Facilities Design Original Principles

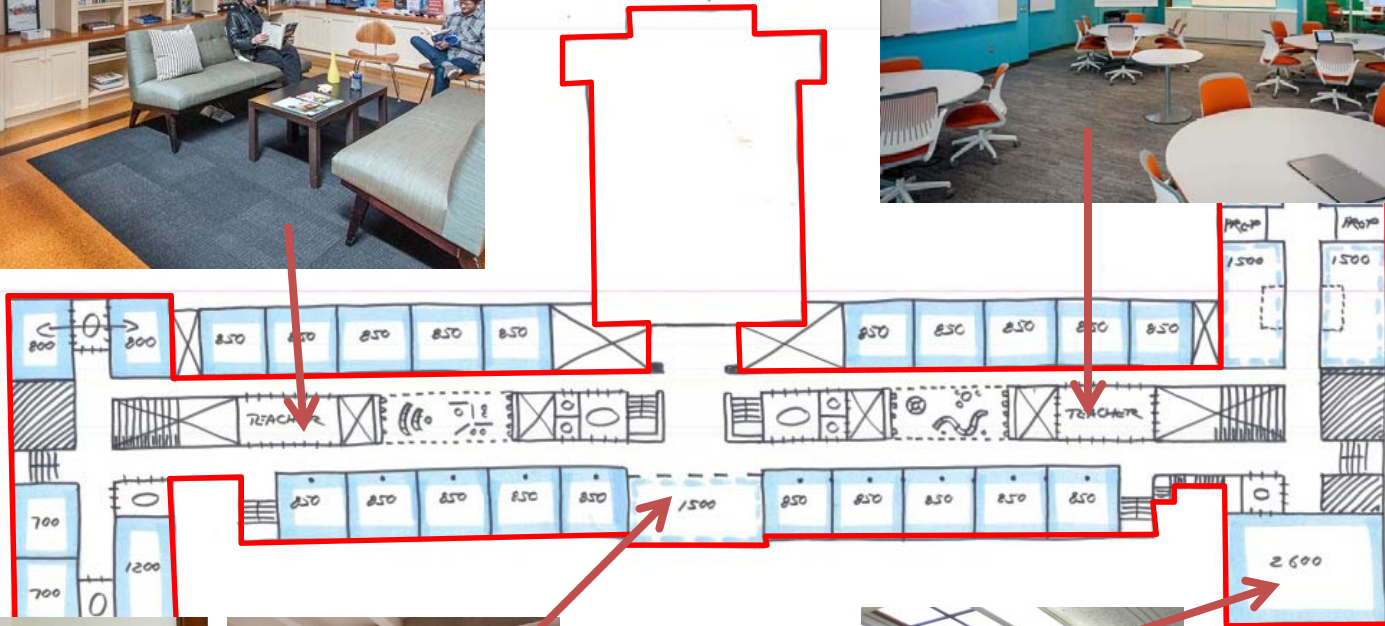
Preservation without Compromise



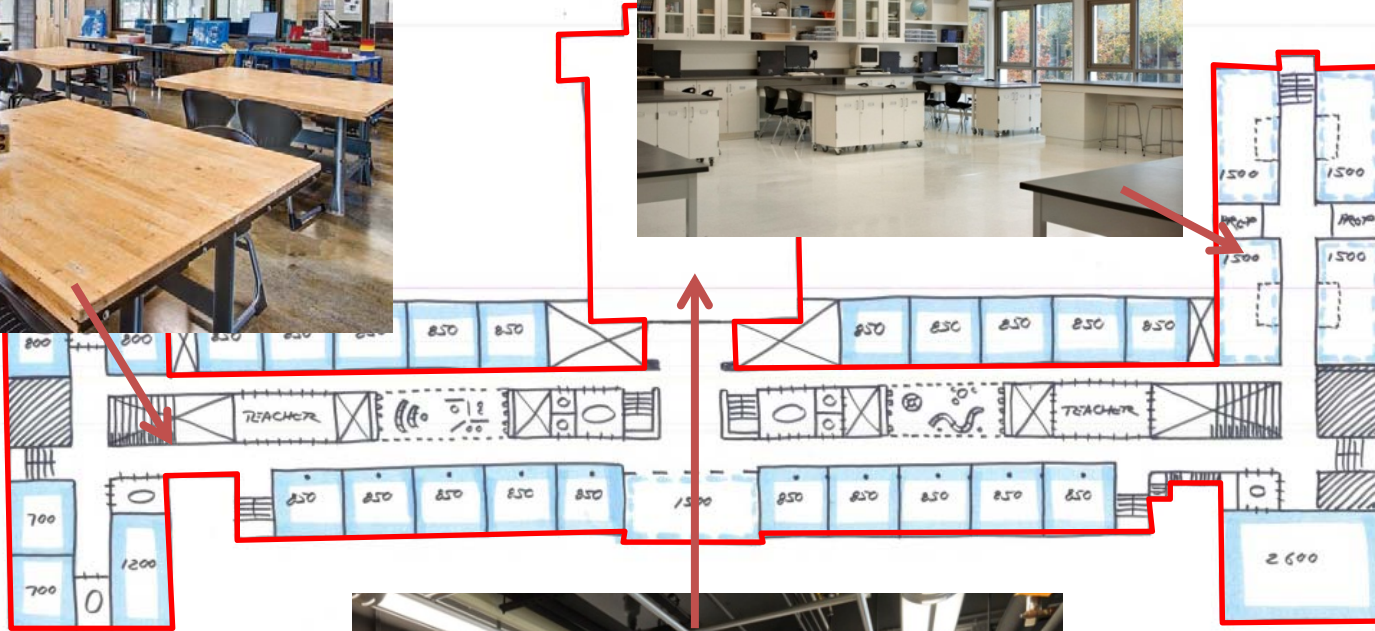
Preservation without Compromise



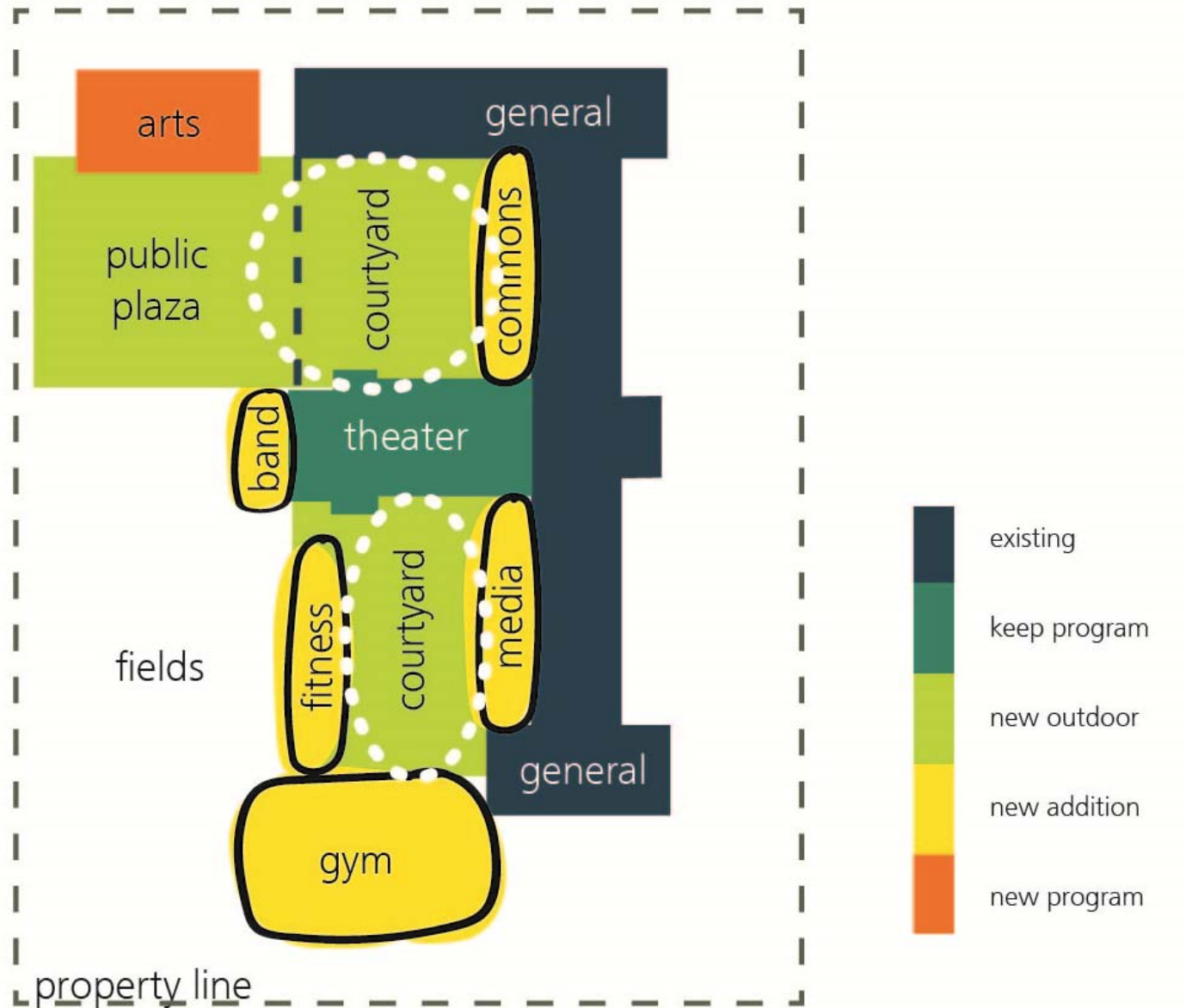
Preservation without Compromise



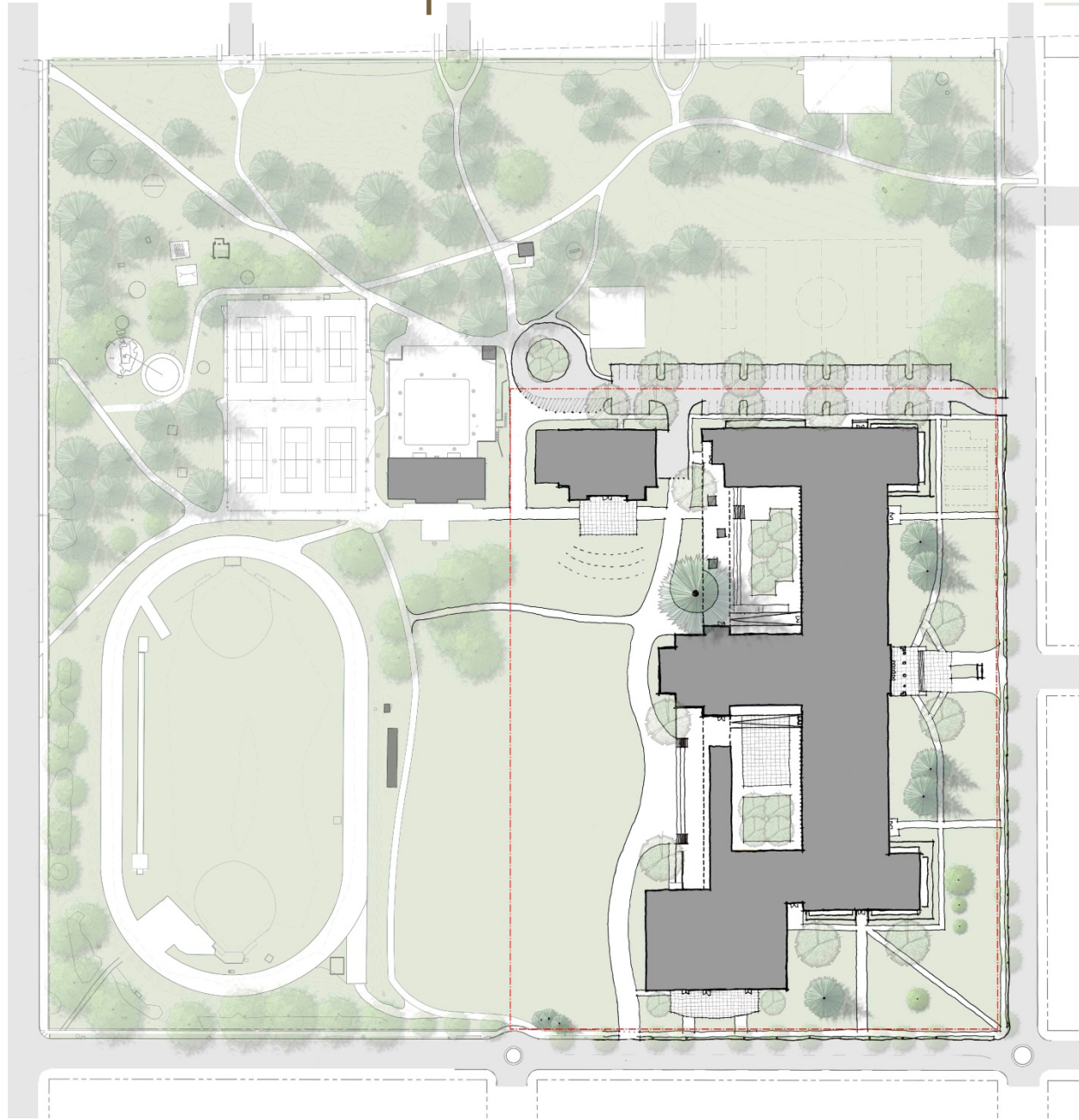
Preservation without Compromise



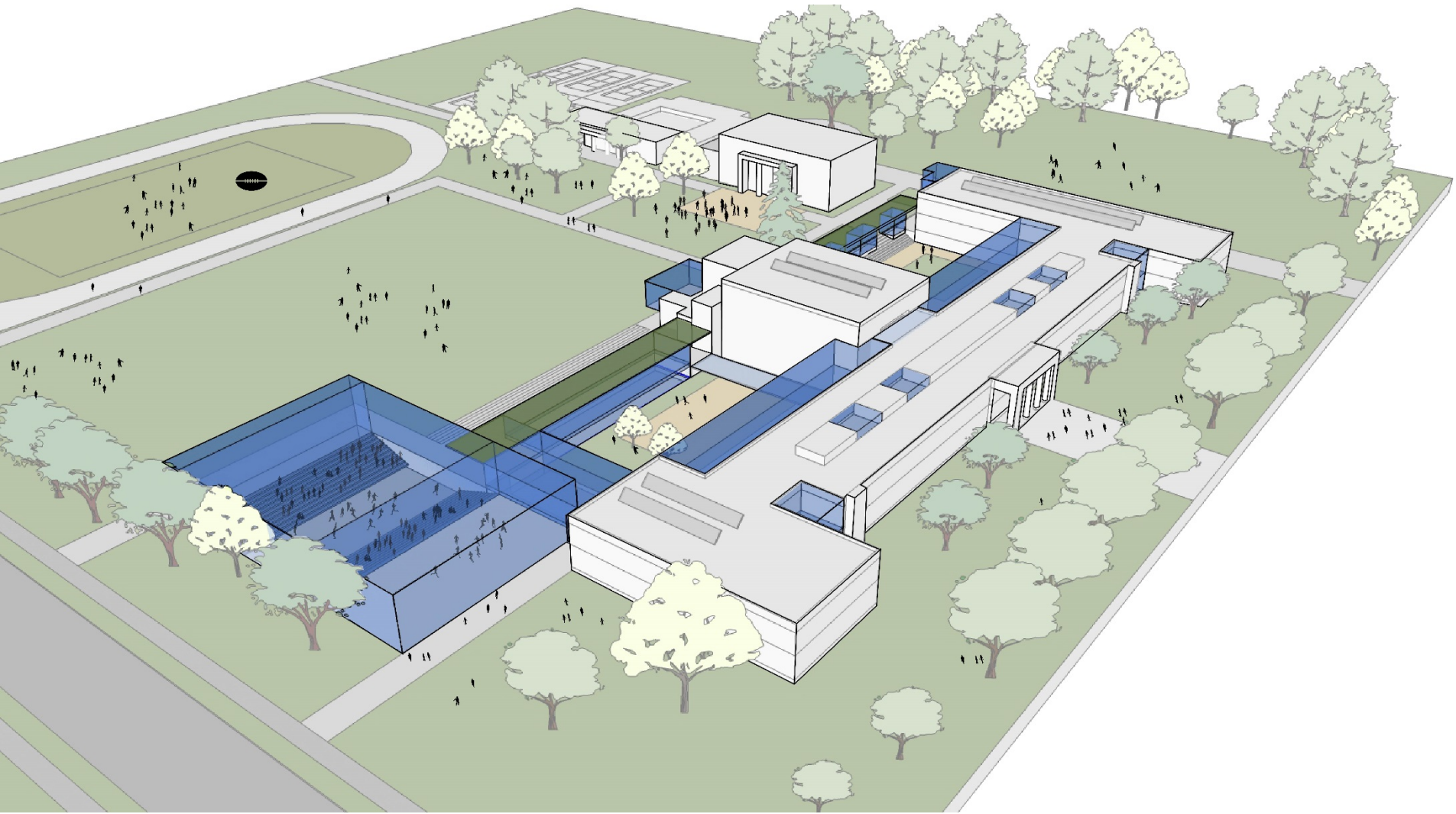
Master Plan :: Concept



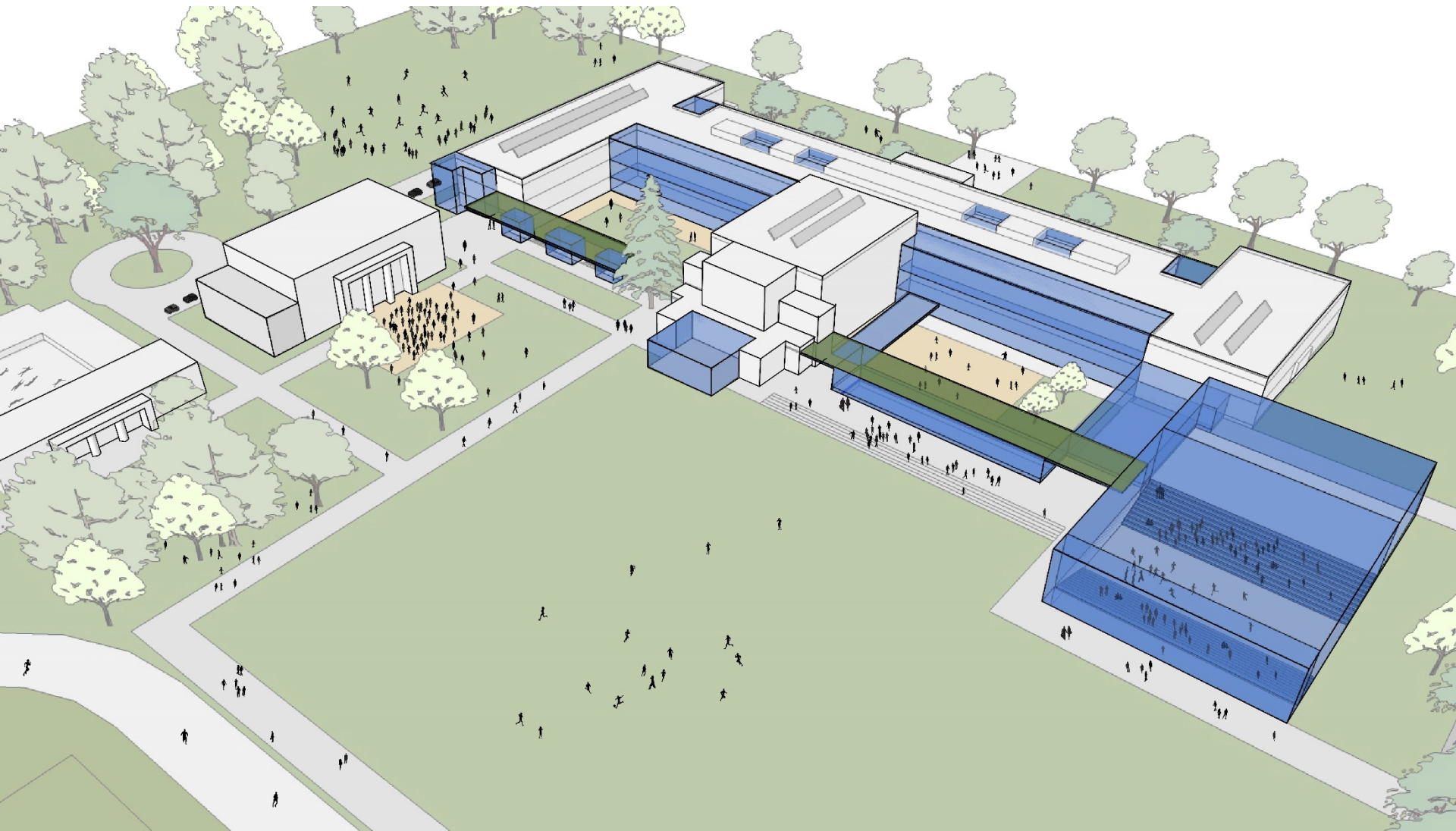
Master Plan :: Site Concept



Master Plan

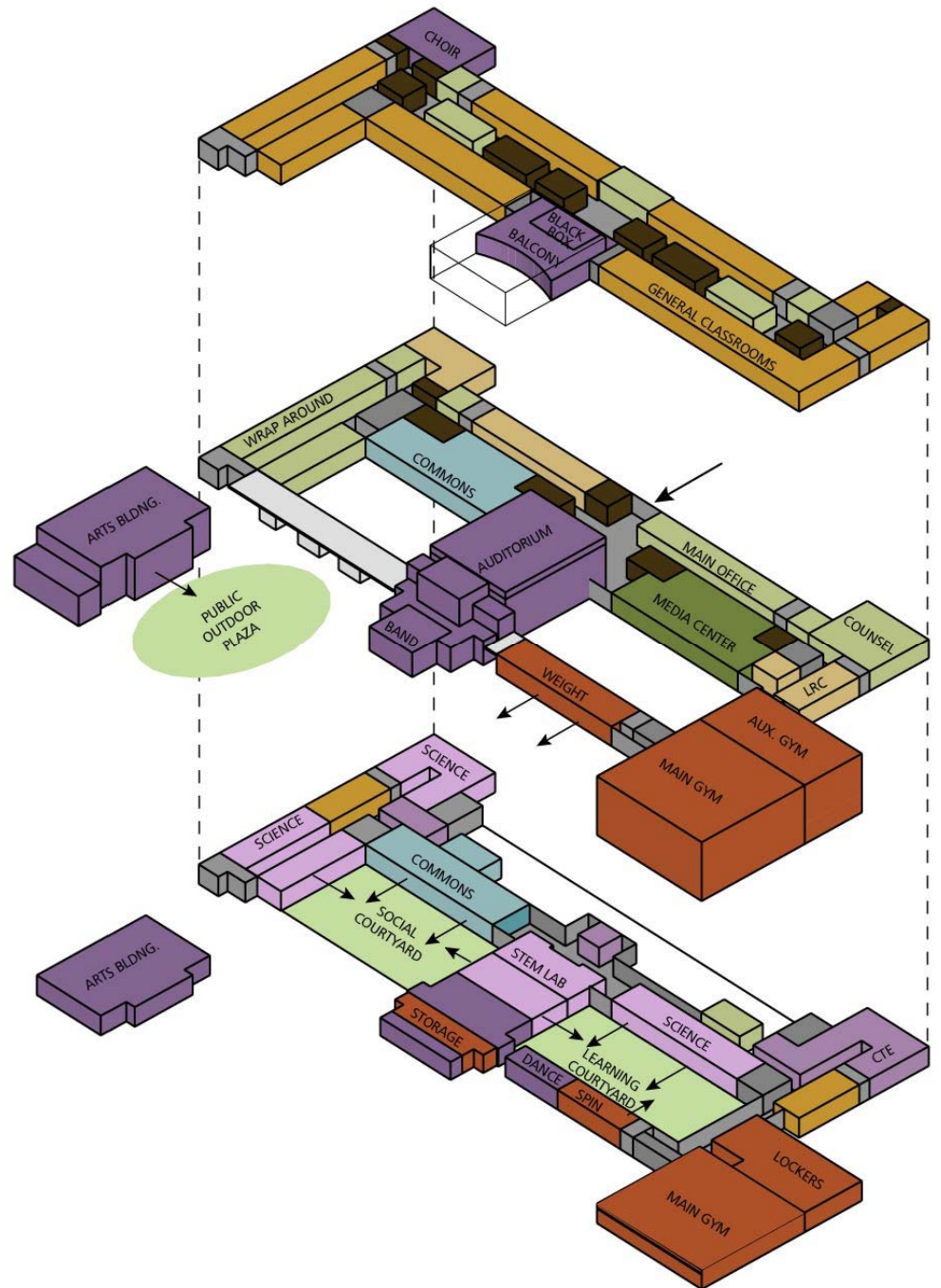


Master Plan

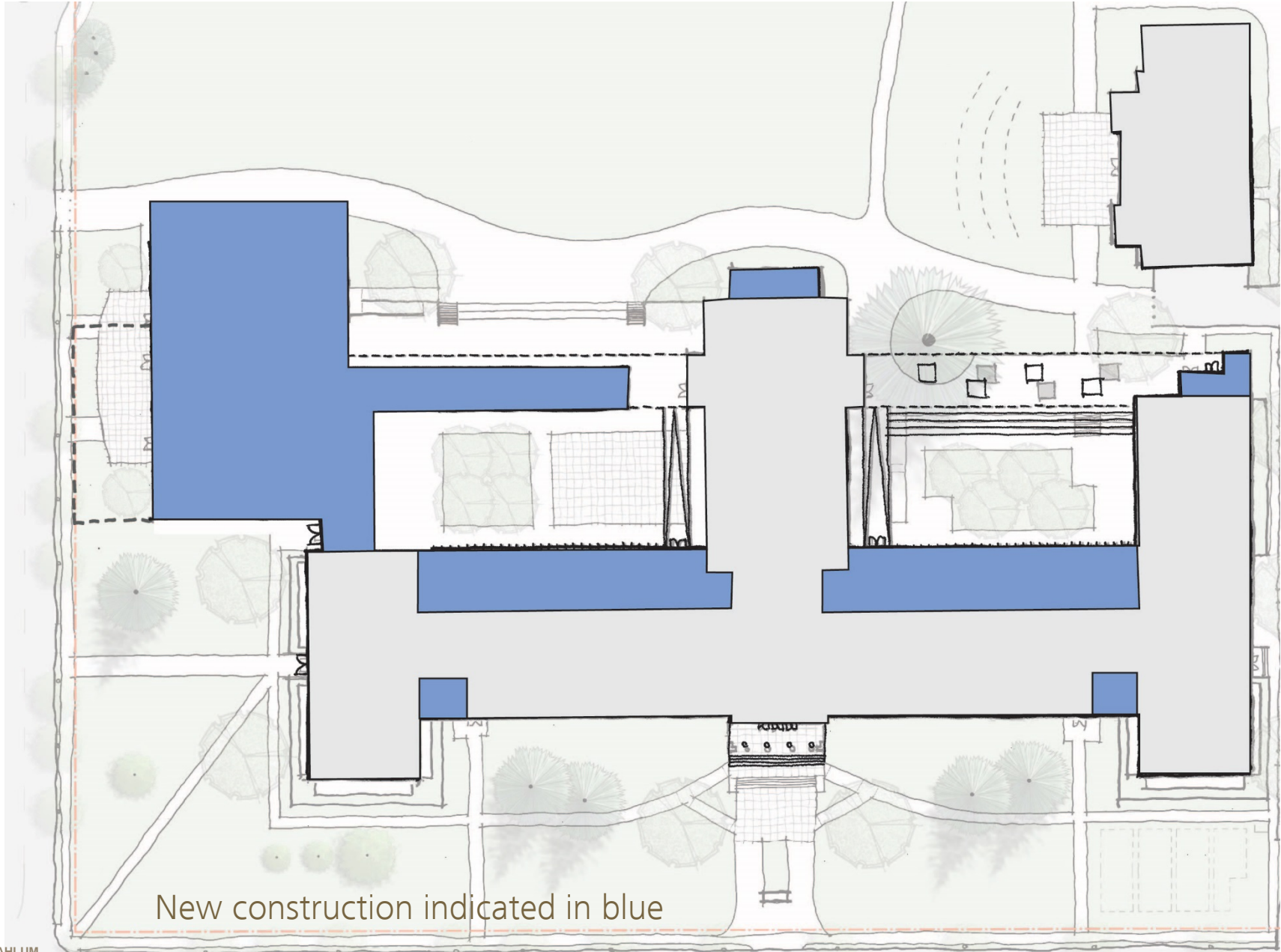


Master Plan

- EXTENDED LEARNING
- GENERAL CLASSROOMS
- MEDIA CENTER
- MEDICALLY FRAGILE AND ISC
- EDUCATION SUPPORT
- STUDENT COMMONS
- SCIENCES / SPECIALIZED CLASSROOMS
- PE / ATHLETICS
- FINE AND PERFORMING ARTS
- CAREER PREPARATION



Master Plan :: Main Floor

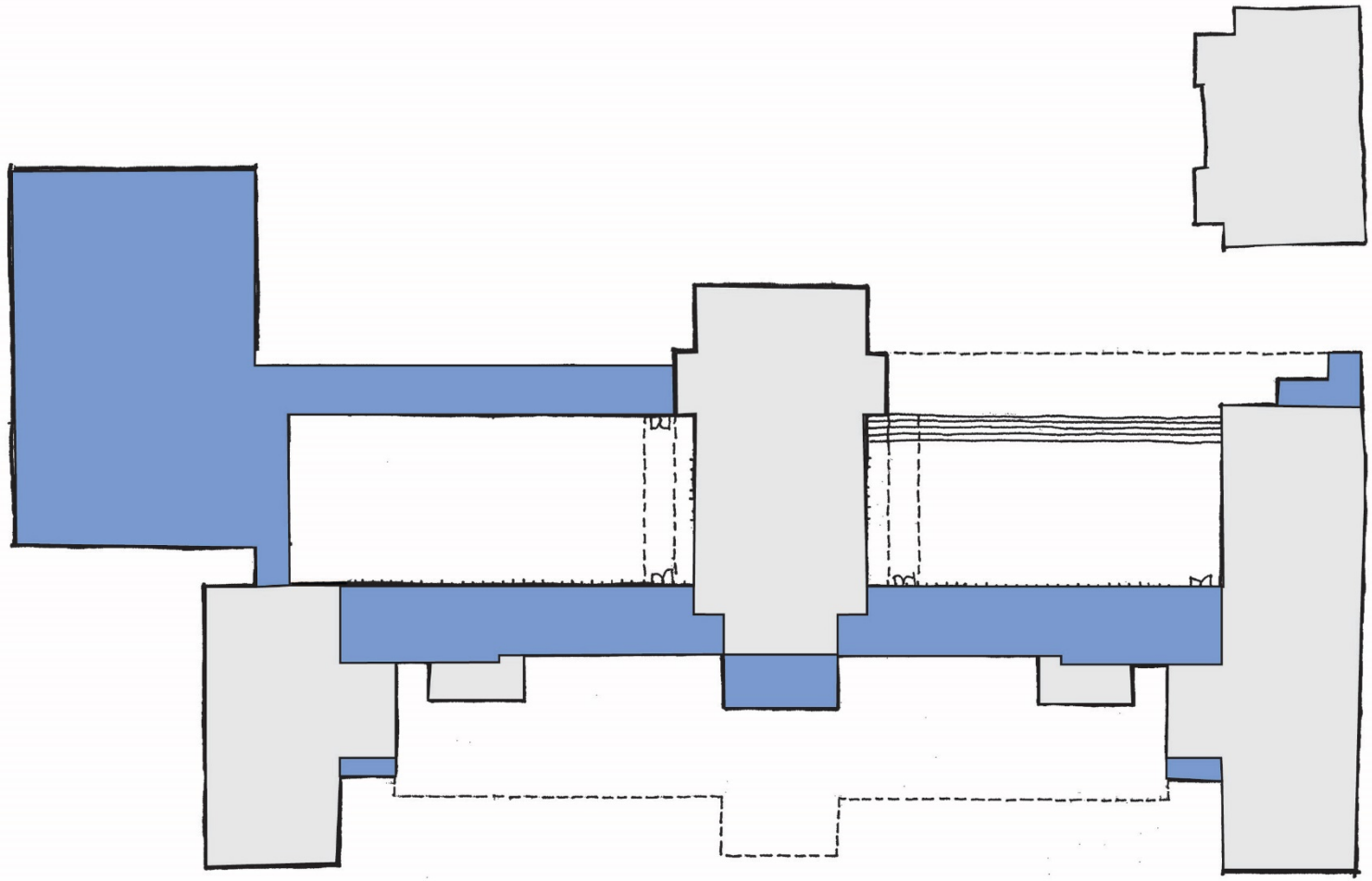


New construction indicated in blue

Master Plan :: Main Floor

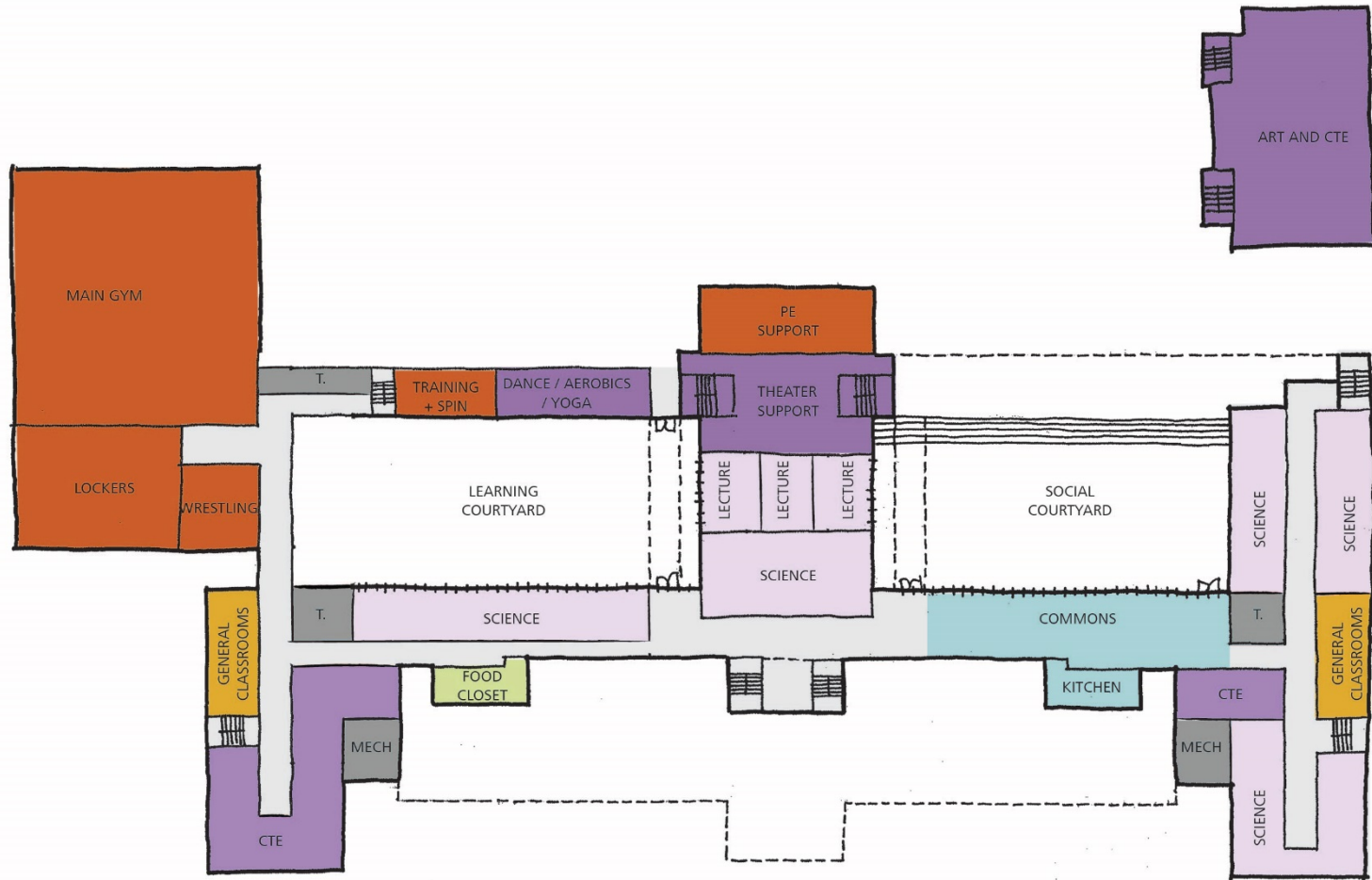


Master Plan :: Lower Floor

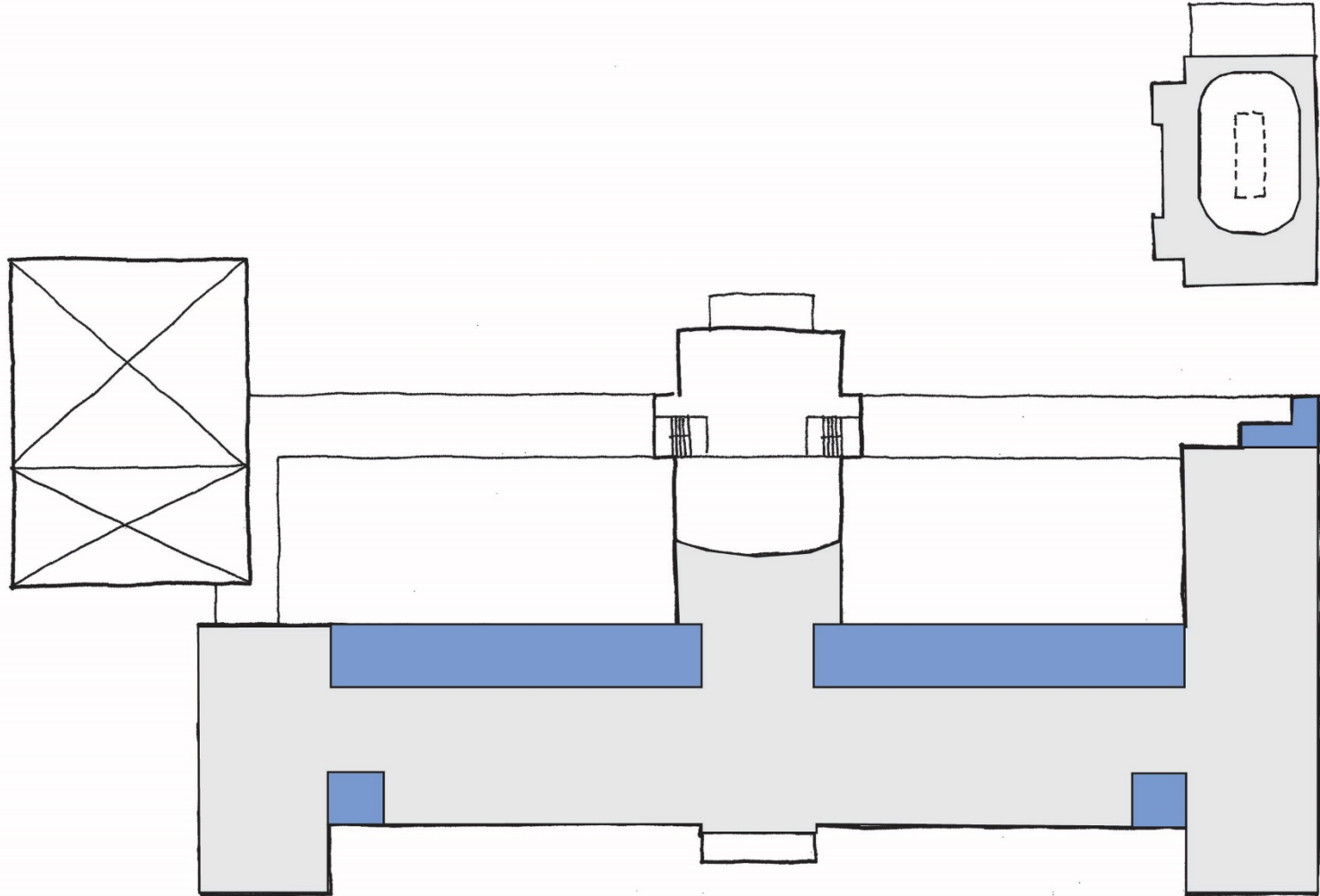


New construction indicated in blue

Master Plan :: Lower Floor

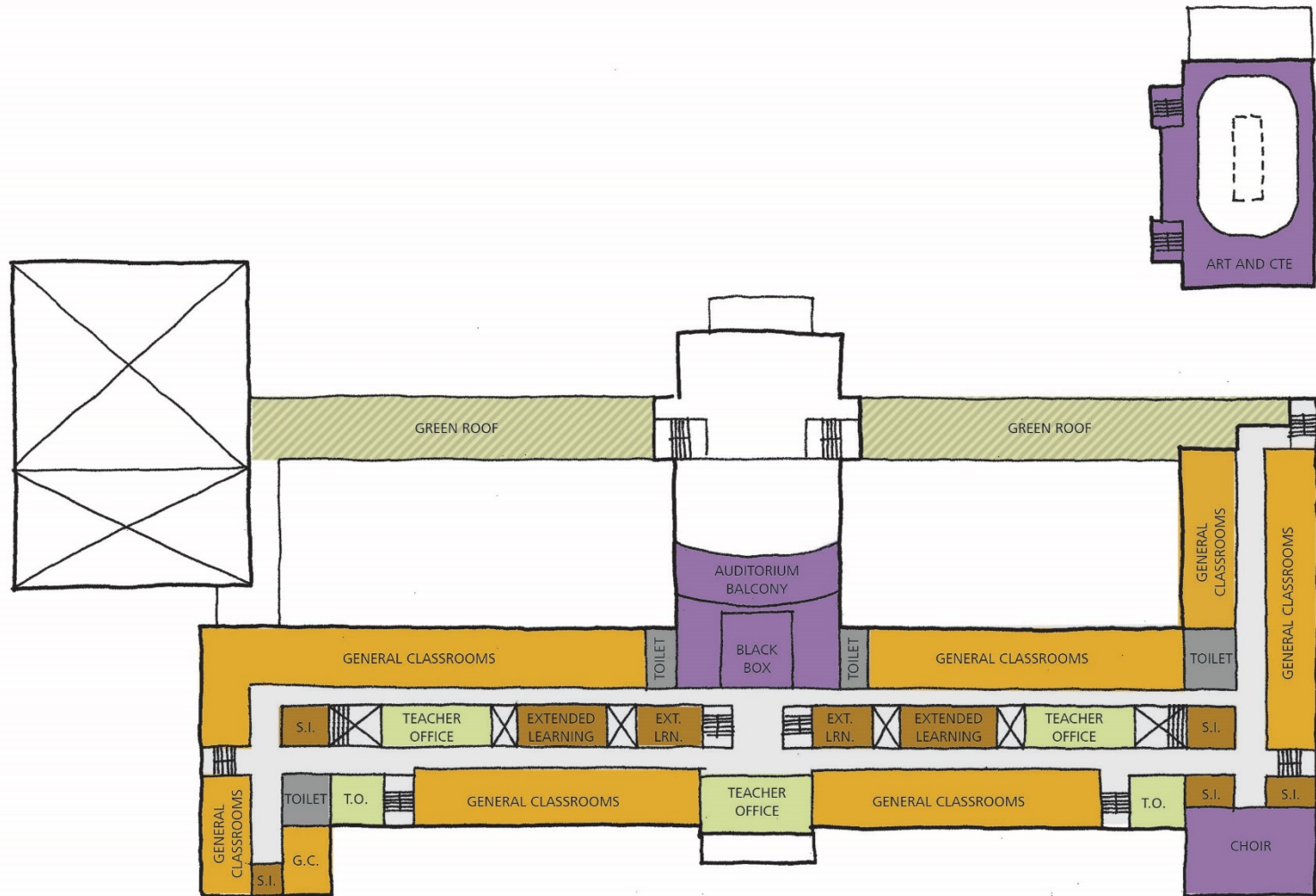


Master Plan :: Upper Floor

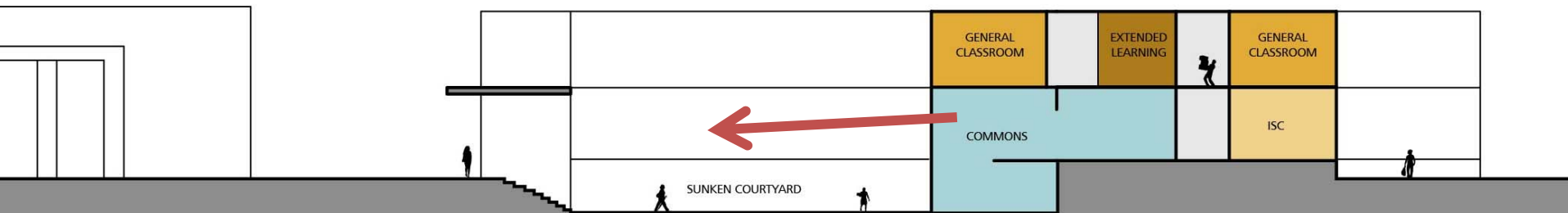
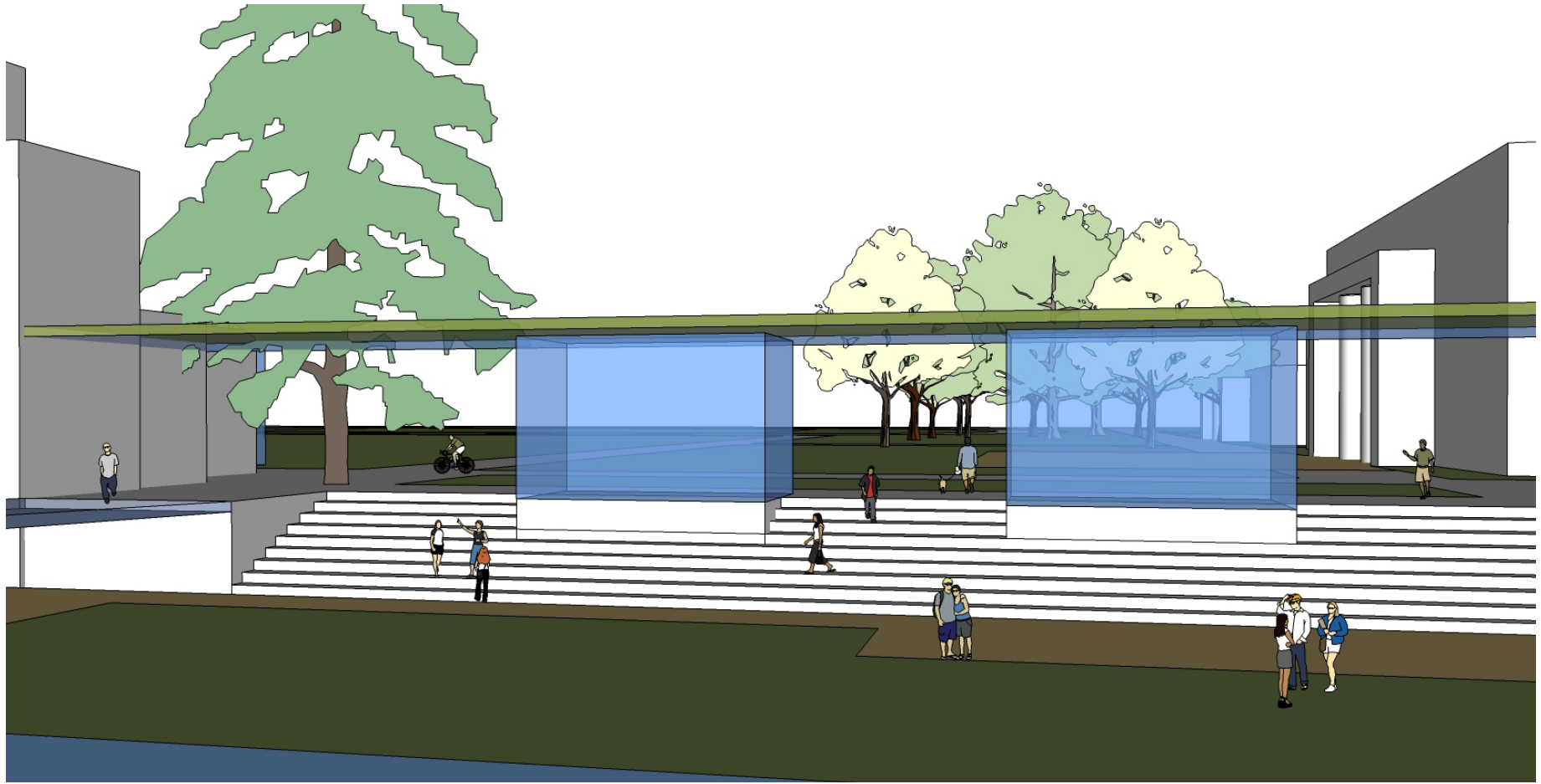


New construction indicated in blue

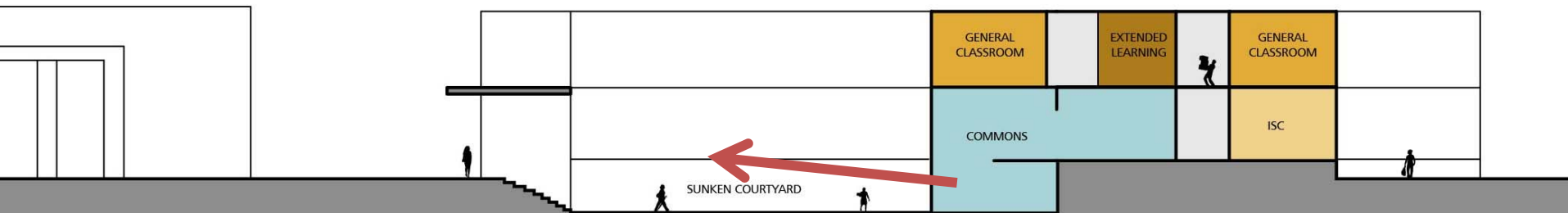
Master Plan :: Upper Floor



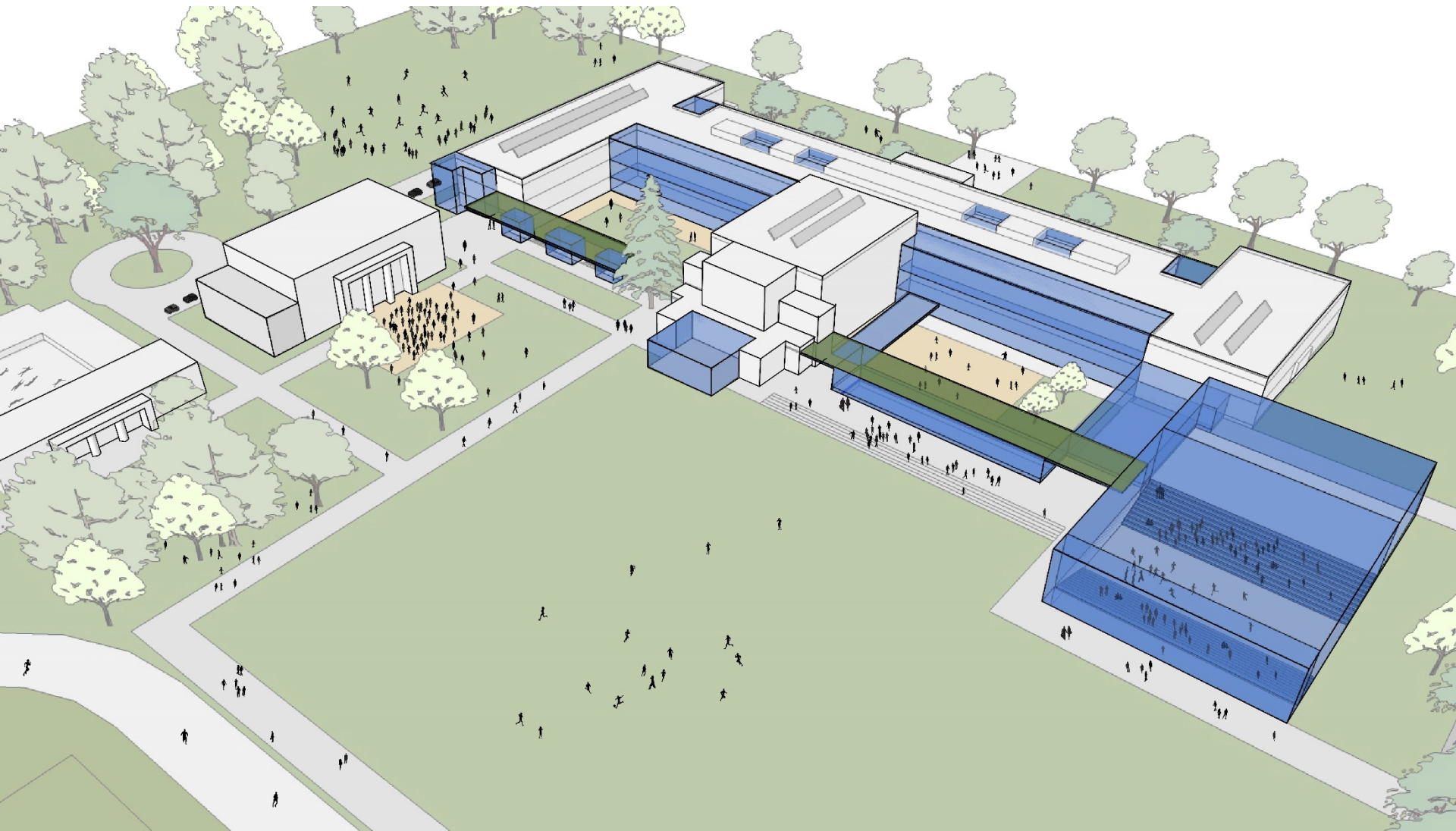
Master Plan



Master Plan



Master Plan



Master Plan :: Outstanding Issues

Parking

We asked each community group to evaluate some of the site circulation and parking studies, which were generated in Masterplanning Workshop 1. Here are some of their comments.

“parent drop-off in parking lot...is not in the spirit of Portland”

“driving in campus is dangerous; barrier to the park”

“don't connect through [the site]”

“current [parking] spaces not typically full- why do we need more?”

“more open space/green' less impervious surfaces”

Fields

We asked each community group to evaluate some of the schemes that were generated during Masterplanning Workshop 1 with the community. Here are some of their comments.

“keep all athletes on campus”

“soccer on site, baseball/softball off site is most flexible”

“share with Parks & Rec by season; design needs to represent all sports”

“soccer on PPS property might allow revenue from parks”

“how to use fields as something else- removable mound, performance, synthetic turf?”

Project Overview

Project Background

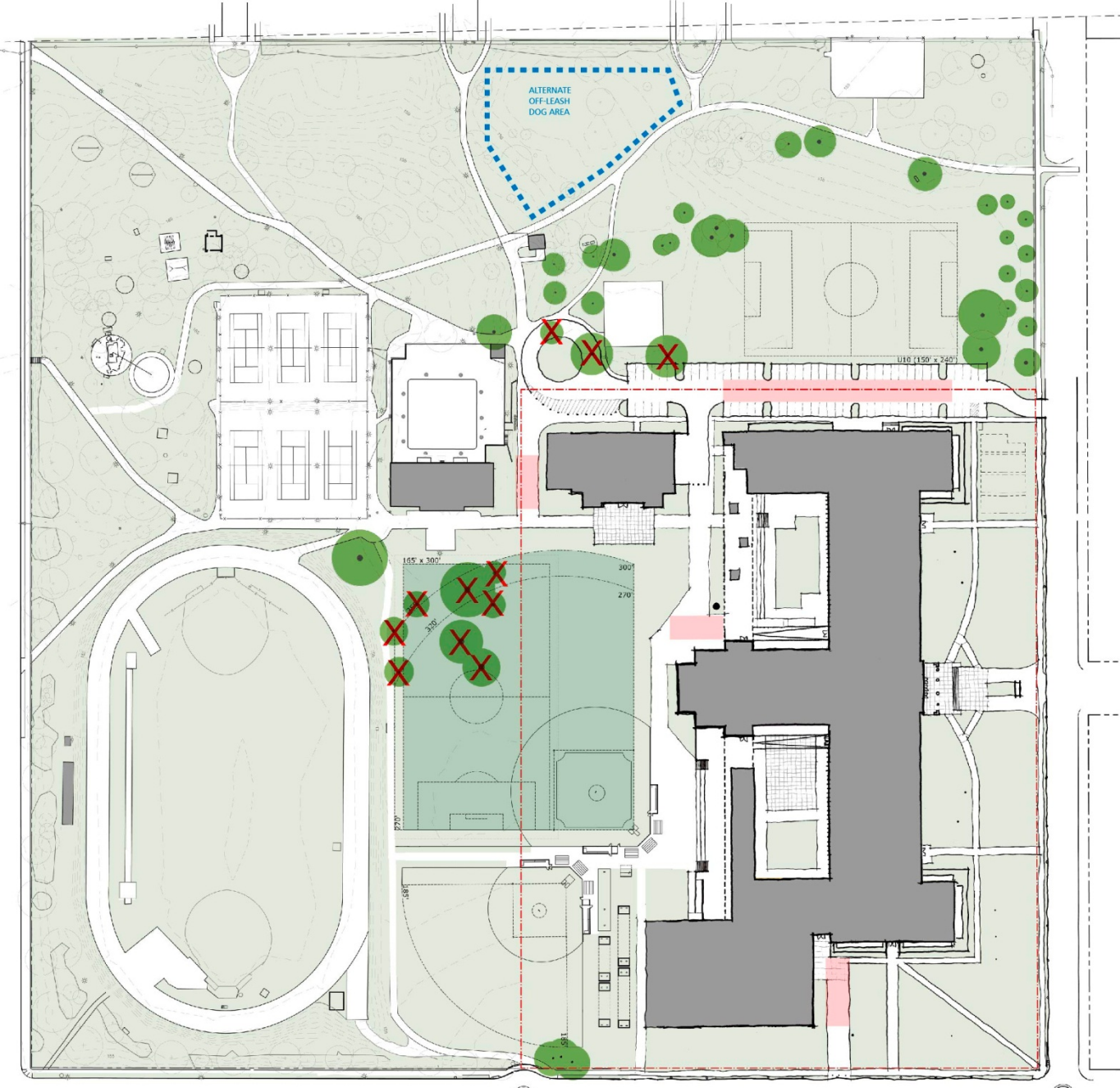
Proposed Building Program :: With a Focus on Comparison

Master Plan

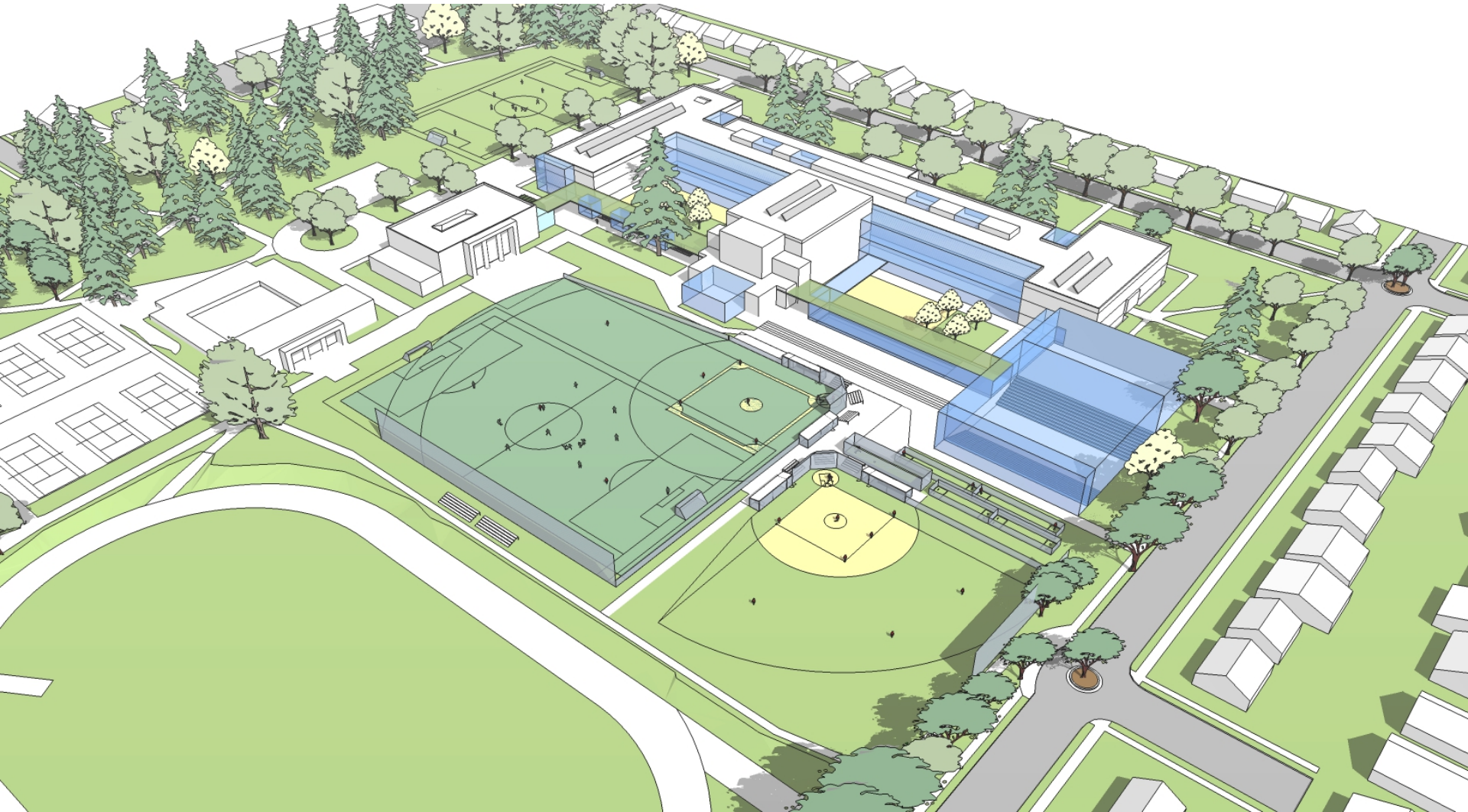
Fields

Overview of Today's Group Activities

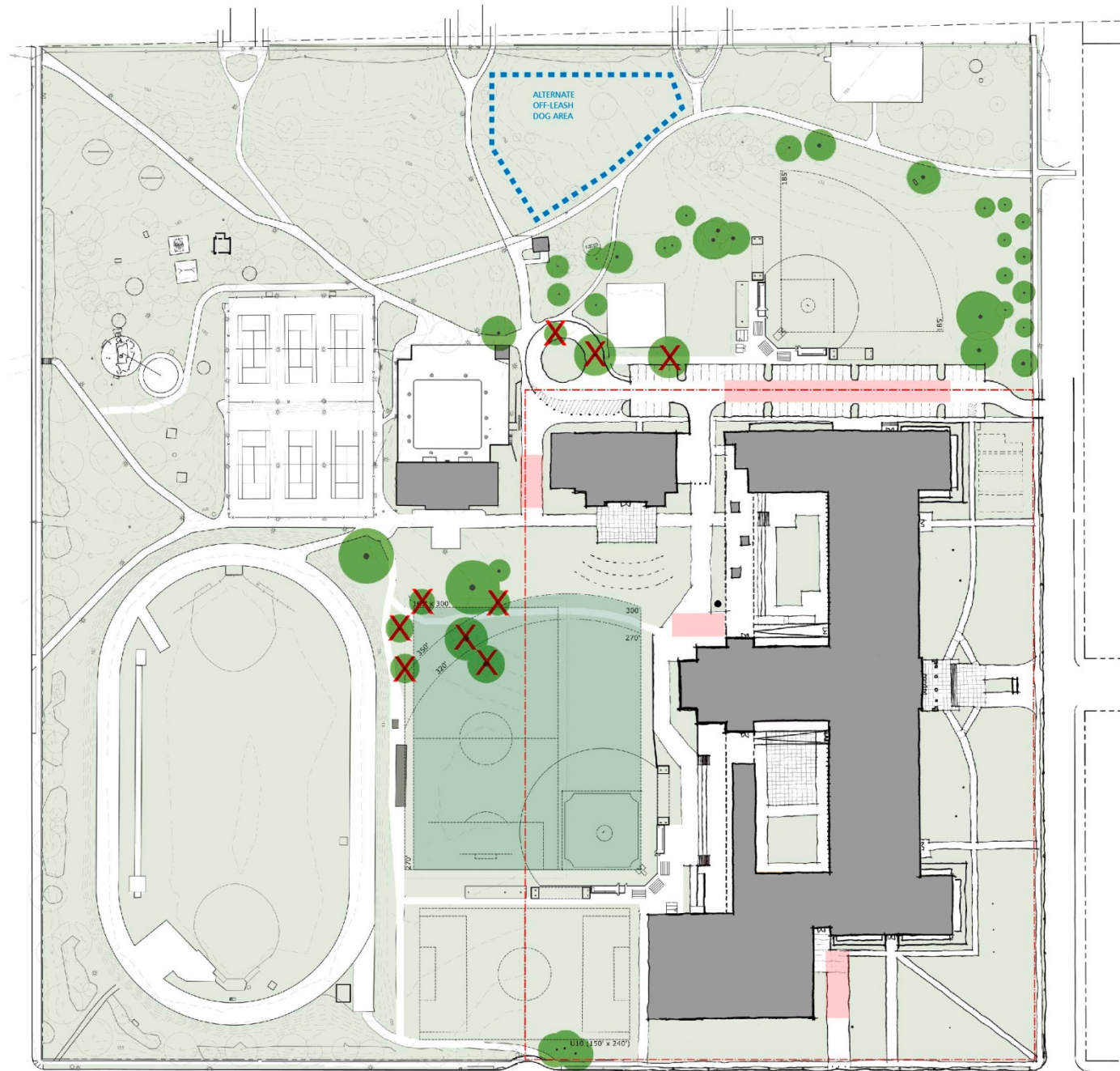
Option One



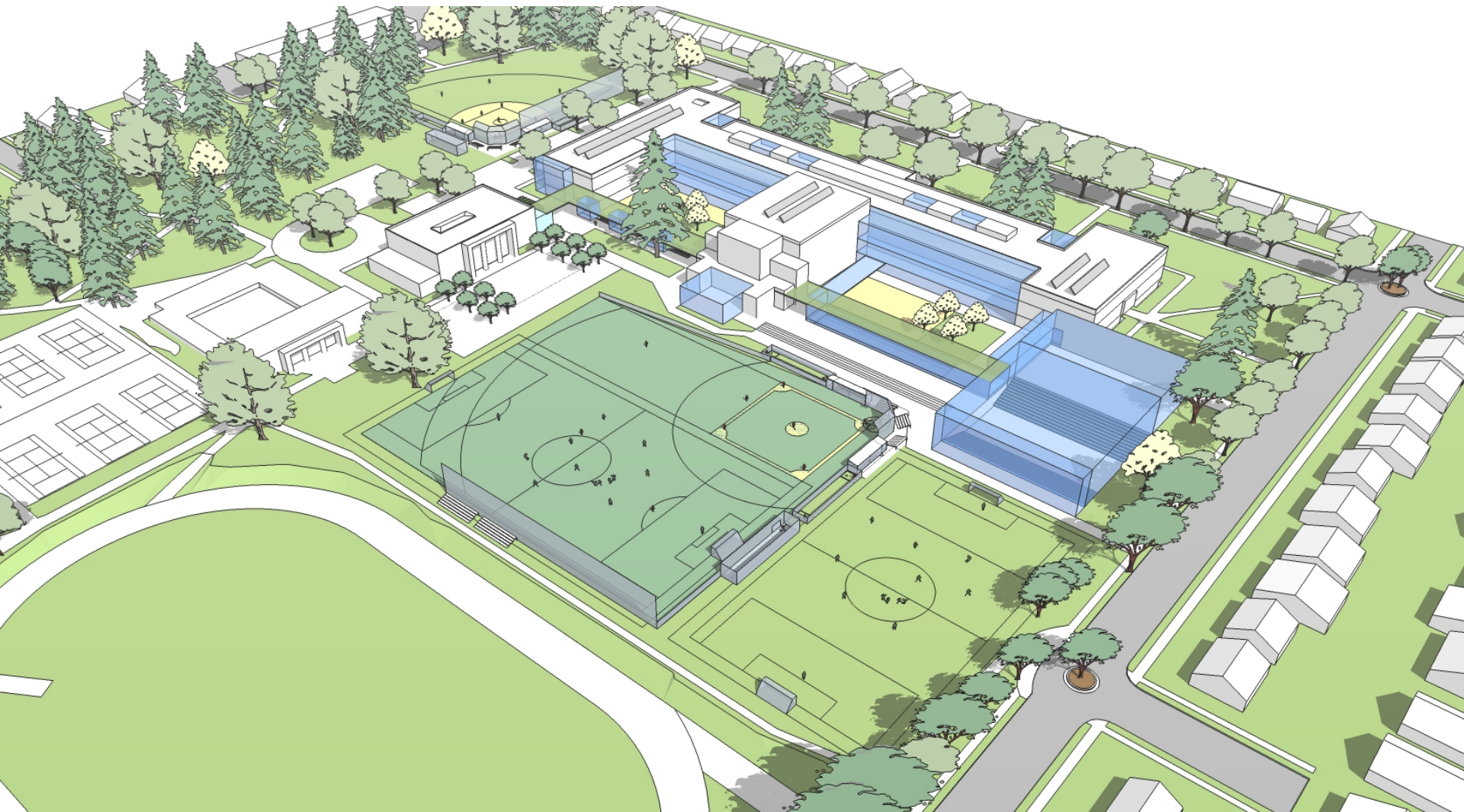
Option One



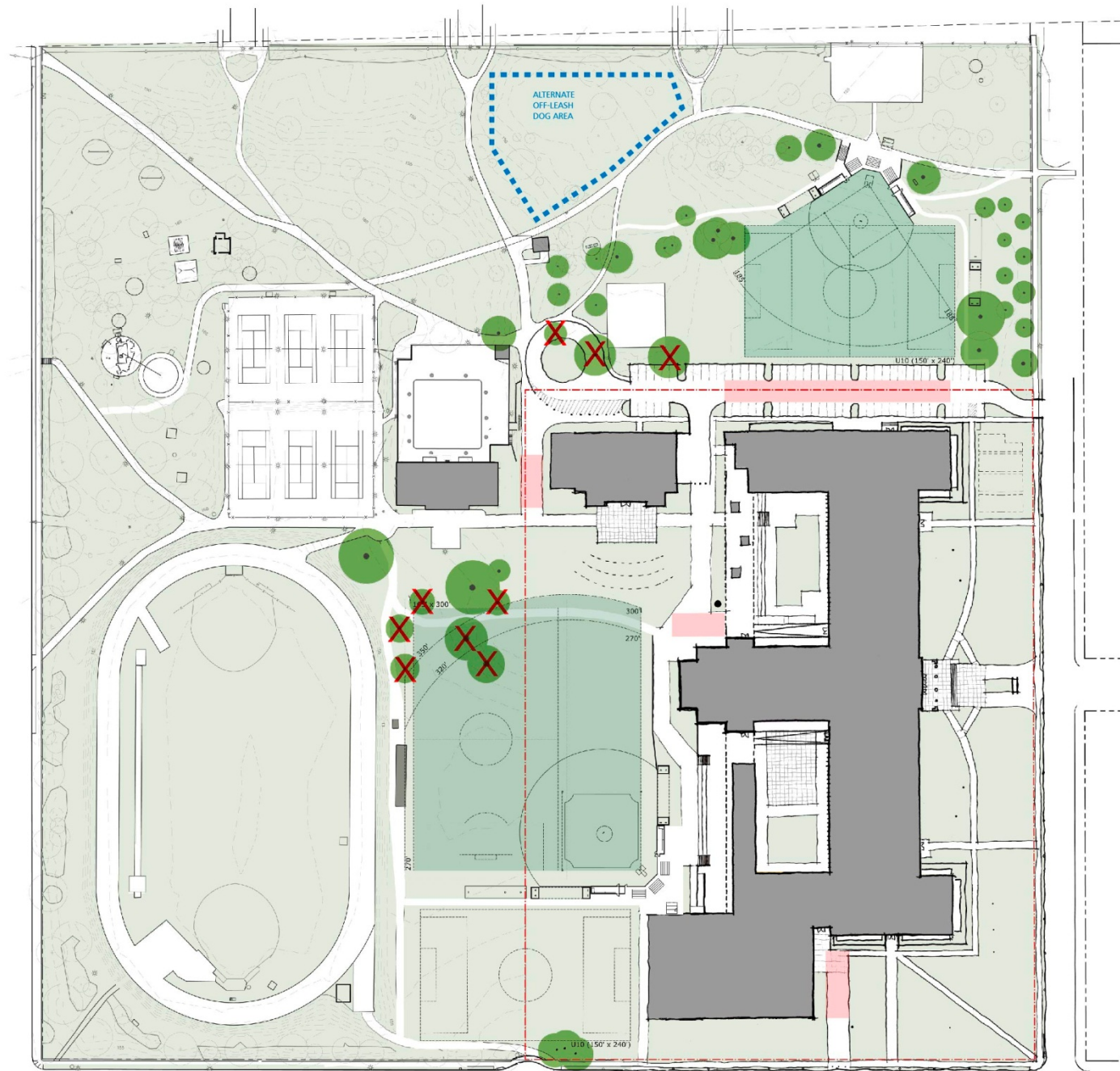
Option Two



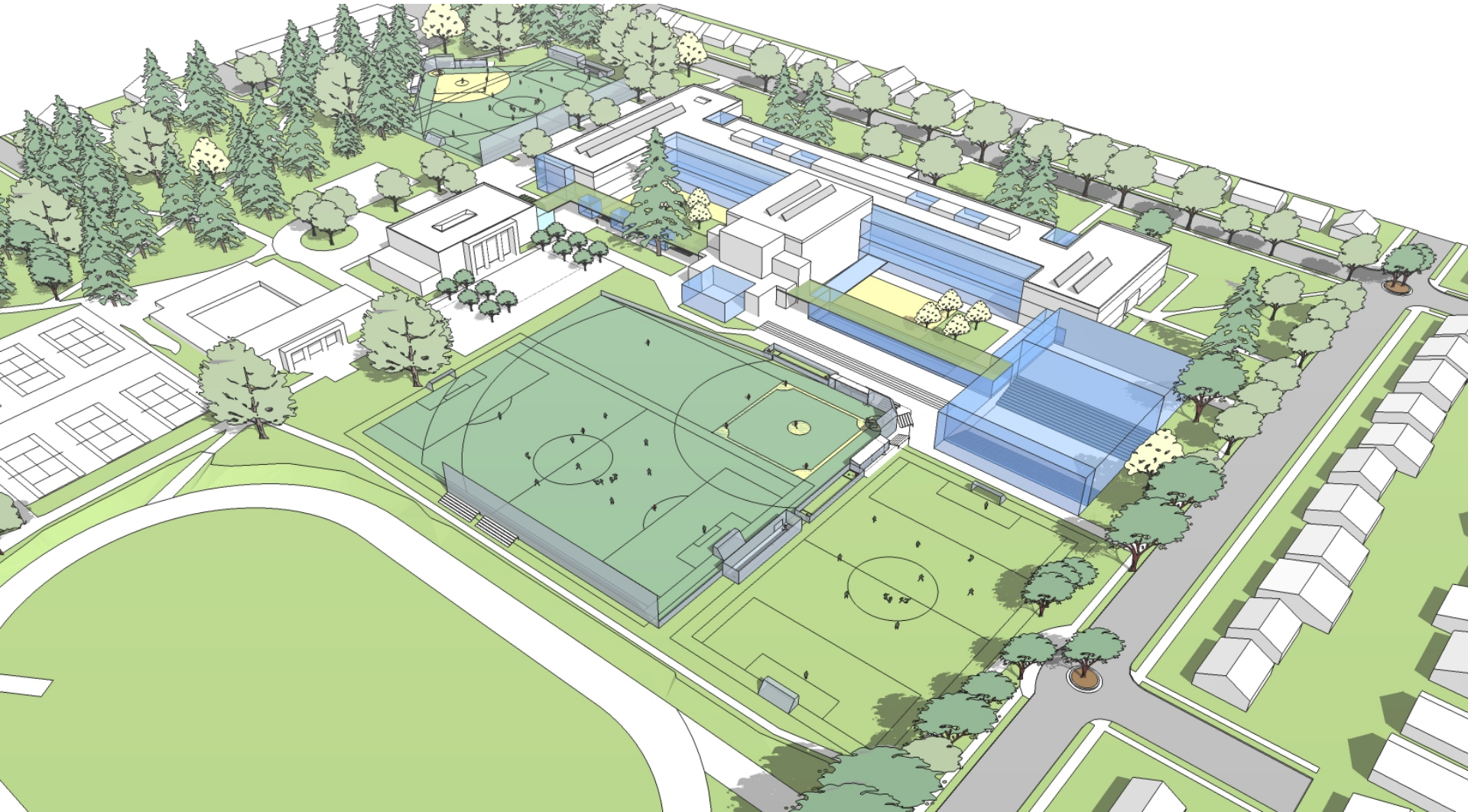
Option Two



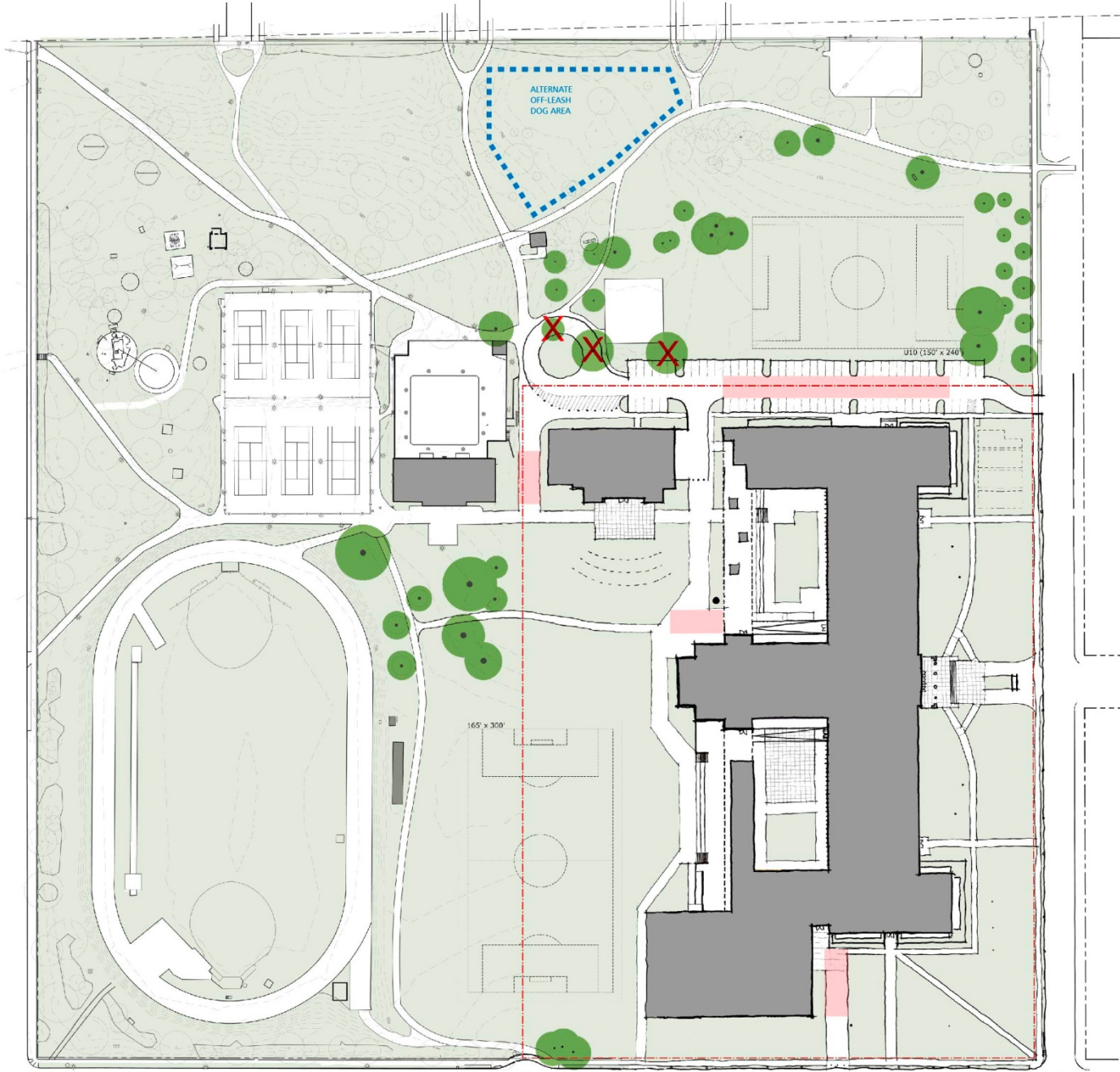
Option Three



Option Three



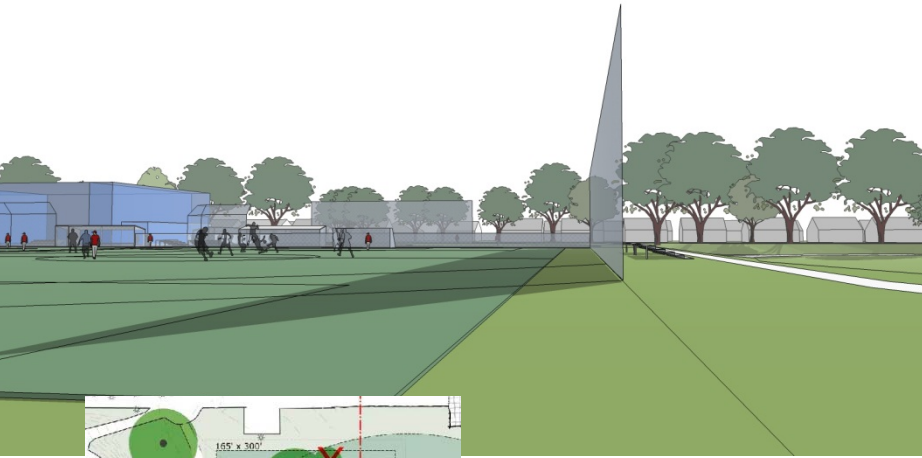
Option Four



Option Four



Comparison :: Impacts to Existing Trees



1



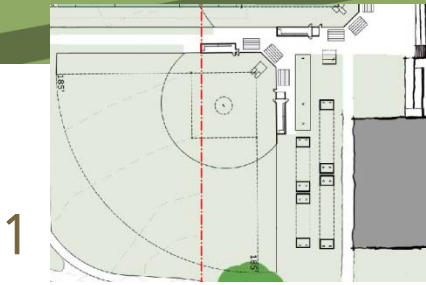
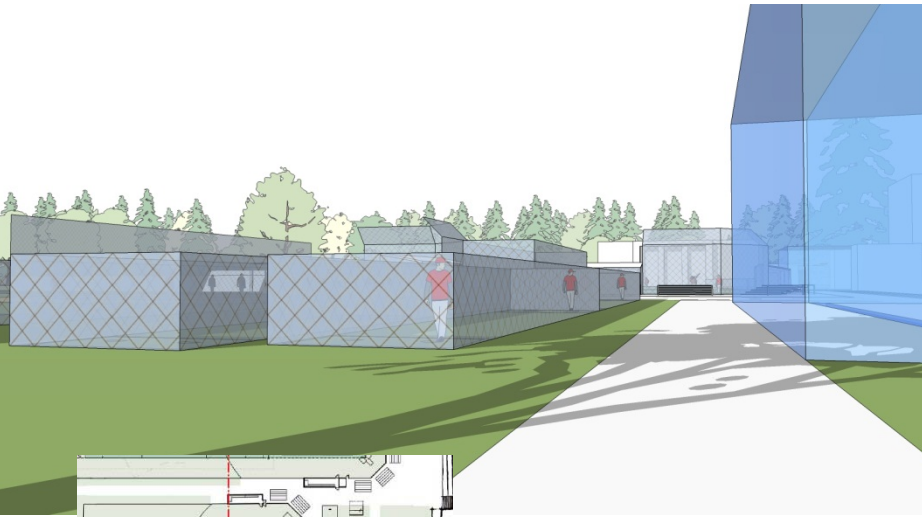
2/3



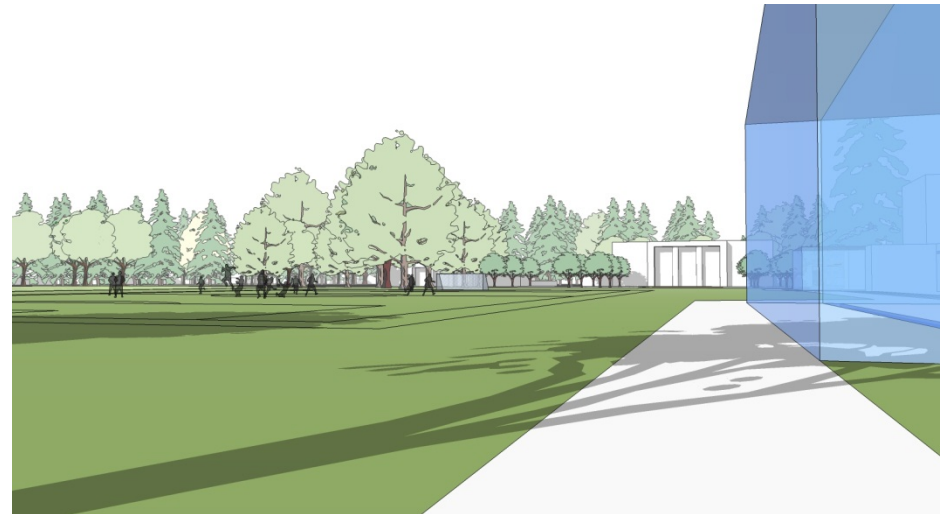
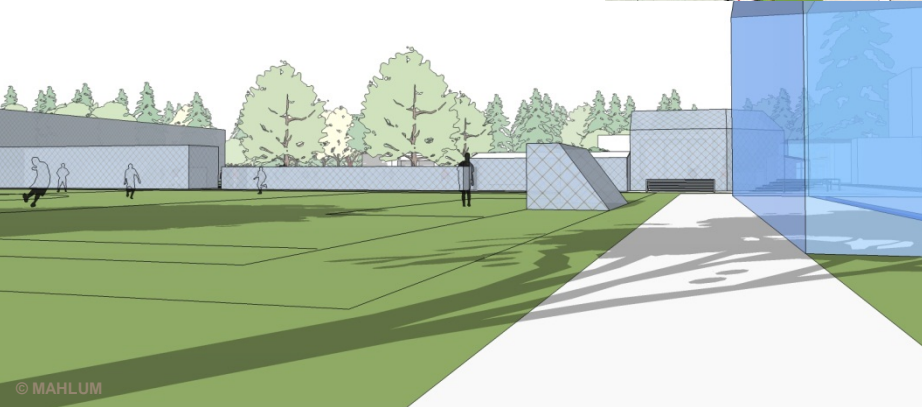
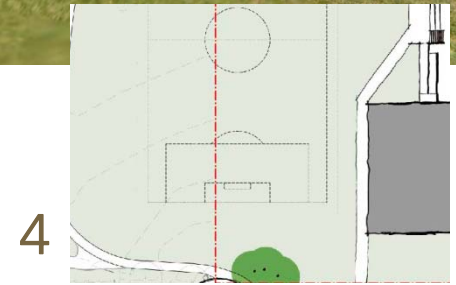
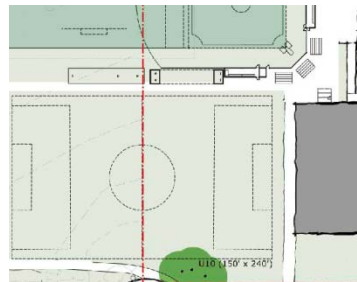
4



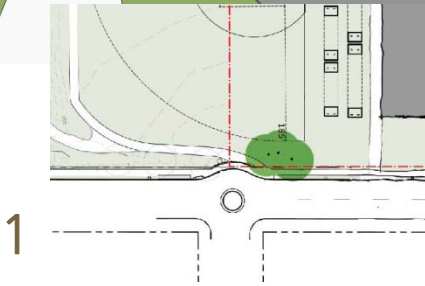
Comparison :: Impacts to Openness



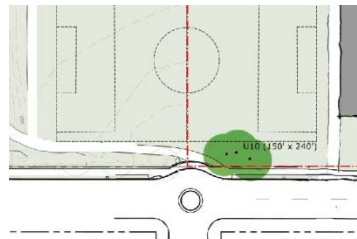
2/3



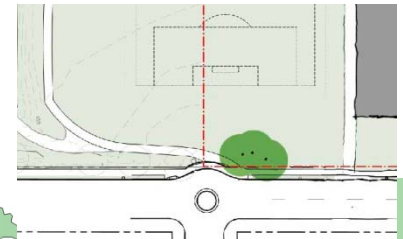
Comparison :: Impacts to View Corridors



2/3



4



Project Overview

Project Background

Proposed Building Program :: With a Focus on Comparison

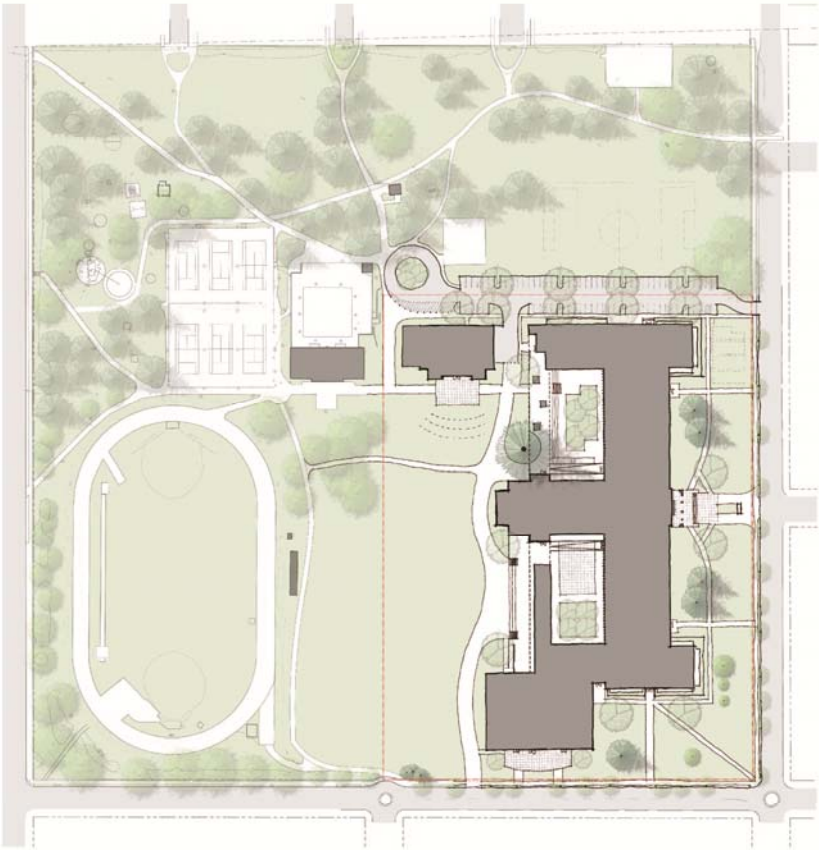
Master Plan

Fields

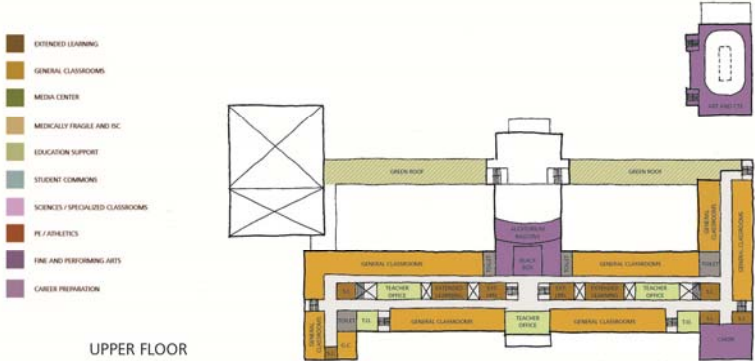
Overview of Today's Group Activities

Group Activity 01

SITE CONCEPT



BUILDING CONCEPT AND MASSING



UPPER FLOOR



Positive Aspect & Why?



Negative Aspect & Why?



What do you want to know more about?

Group Activity 01

Design Advisory Group Mission



The Grant High School modernization will result in an inclusive learning environment that fosters strong, productive relationships among students, teachers, and the community through inspiring, flexible spaces that honor the history while supporting students' success in college, career, and life.

From Broad Goals to Actionable Items

Use this goal and the masterplan concept to generate 3-5 specific features, activities, or programs. If we were to achieve this statement, what would the school look like? How would Grant operate?

1

Sustain a student-centered approach, where all learners feel connected by celebrating diversity and inclusion

Transformational Idea



Must Do



Low Hanging Fruit



Group Activity 02

Athletic Fields:

Option One

- 1 Turf Baseball Field (shortened right outfield)
- 1 Turf Soccer Field
- 1 Grass Soccer Field
- 1 Softball Field (on Parks property)
- Removes 5 mature trees from park
- No grandstands



Athletic Fields:

Option Two

- 1 Turf Baseball Field (shortened left outfield)
- 1 Turf Soccer Field
- 1 Softball Field
- 1 Grass Soccer Field (on Parks property)
- Removes 8 mature trees from park
- No grandstands



Athletic Fields:

Option Three

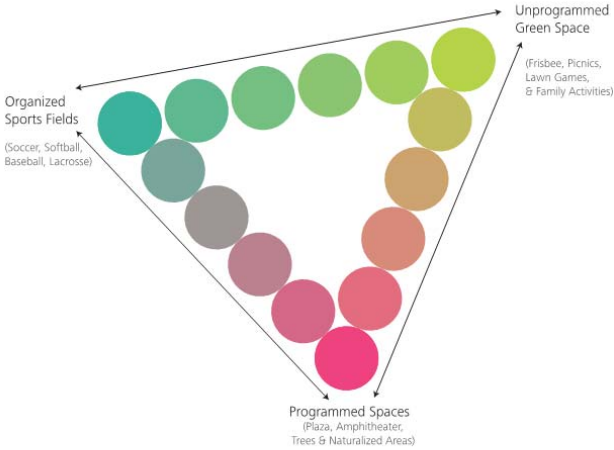
- 1 Turf Soccer Field
- 1 Grass Soccer Field (on Parks property)
- Keep all trees
- No Baseball Field on site
- No Softball Field on site
- No grandstands



Group Activity 02

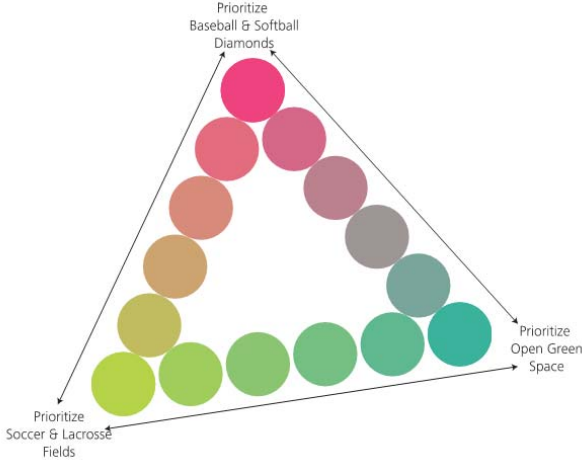
If there was one site configuration that **best supported the community...**

Place one dot on on the triangle to indicate where you fall on the spectrum.



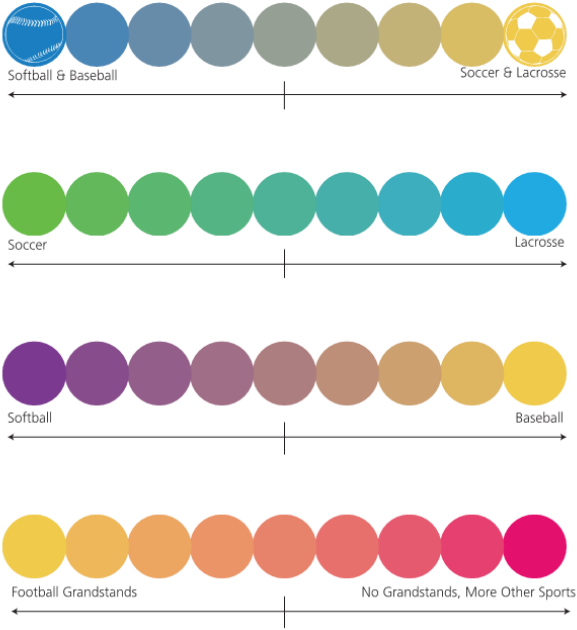
If there was one field organization that supported the **most Grant students...**

Place one dot on on the triangle to indicate where you fall on the spectrum.



On-Site Athletic Fields Prioritization

Place one dot on each black line to indicate where you fall on the spectrum.



Feedback